

Table 1 Mean number of pheasants counted per 30-mile route on the August roadside survey.\*

YEAR	NORTH WEST	NORTH CENTRAL	NORTH EAST	WEST CENTRAL	CENTRAL	EAST CENTRAL	SOUTH WEST	SOUTH CENTRAL	SOUTH EAST	STATEWIDE	HENS/ <sup>a</sup> COCK	COCK <sup>b</sup> HARVEST
1962	84.2	104.6	98.0	81.7	70.6	32.3	52.4	12.0	7.4	61.1		
1963	135.8	110.3	99.5	94.2	65.0	47.1	123.1	23.2	18.2	78.7	2.9	66%
1964	96.4	137.8	109.9	92.9	54.5	53.9	92.6	26.3	18.2	75.4	4.3	77%
1965	45.4	67.5	47.7	64.7	35.5	43.9	97.6	44.4	21.5	49.6	3.2	69%
1966	43.5	75.3	57.5	58.4	49.3	63.9	144.1	40.7	17.1	56.6	3.1	68%
1967	31.0	56.8	57.2	42.4	53.2	58.6	108.3	38.8	21.1	49.1	4.2	76%
1968	38.0	56.0	56.6	53.5	52.2	64.3	127.4	38.7	19.7	52.7	3.6	72%
1969	18.8	44.7	62.5	42.2	57.6	57.2	77.9	44.2	25.2	45.5	3.5	71%
1970	39.2	53.0	59.6	56.1	87.8	91.7	129.1	63.8	40.5	66.2	3.5	71%
1971	34.6	45.2	49.0	66.2	82.6	104.3	101.6	49.7	48.4	62.0	3.6	72%
1972	37.9	44.6	61.0	61.4	73.2	88.6	112.3	54.3	25.8	59.6	2.0	50%
1973	47.0	56.9	65.4	66.3	88.7	103.5	72.4	54.3	30.2	65.8	3.7	73%
1974	46.6	53.2	52.5	60.5	40.0	55.9	90.1	49.6	16.8	49.7	4.5	78%
1975	10.5	28.7	52.3	34.3	43.2	64.3	51.0	45.4	27.4	38.8	4.8	79%
1976	14.8	42.2	68.1	44.8	54.9	75.4	61.7	49.2	28.7	48.2	4.0	75%
1977	26.9	44.2	86.7	56.9	50.8	78.5	75.1	44.3	24.4	51.7	3.6	72%
1978	36.3	26.1	68.8	67.8	50.5	63.2	76.7	45.5	30.5	49.7	3.9	74%
1979	40.1	29.6	44.8	49.4	39.2	39.6	80.9	51.5	21.8	42.4	3.5	71%
1980	51.2	61.7	81.2	98.7	72.2	63.5	82.1	68.9	37.2	67.0	3.7	73%
1981	66.4	53.5	83.6	92.9	57.8	72.9	97.1	57.8	35.2	65.9	3.4	71%
1982	26.7	27.9	38.9	55.5	23.1	20.9	41.6	47.7	19.3	32.3	2.9	66%
1983	9.6	12.8	21.7	21.6	13.3	25.3	42.6	51.1	27.5	23.7	2.9	66%
1984	8.8	11.1	19.2	22.1	14.4	24.5	23.8	38.5	26.4	20.6	2.6	62%
1985	21.6	28.0	36.4	40.0	32.7	26.0	59.2	72.6	42.0	38.9	2.1	52%
1986	27.5	20.4	48.2	31.2	24.8	29.0	49.7	65.2	27.2	34.8	2.0	50%
1987	40.2	36.8	59.7	61.4	41.1	33.2	58.5	64.2	39.0	46.8	2.9	66%
1988	33.6	35.0	45.1	60.8	29.6	26.0	45.7	49.8	29.8	38.1	3.3	70%
1989	25.3	36.5	52.1	69.9	57.1	35.3	38.6	40.0	39.0	43.2	2.9	66%
1990	34.3	49.4	63.9	57.9	44.3	24.7	44.5	31.7	27.3	41.2	5.5	82%
1991	37.3	45.3	48.8	77.6	41.6	33.3	61.2	49.4	41.6	46.8	Discontinued	Discontinued
1992	24.4	50.5	30.5	44.0	42.1	37.8	29.4	23.6	34.2	35.8		
1993	15.8	21.4	15.2	55.2	23.8	25.0	34.3	24.0	28.1	25.9		
1994	45.0	74.1	33.3	83.3	55.6	67.8	47.3	46.0	56.7	56.9		

YEAR	NORTH WEST	NORTH CENTRAL	NORTH EAST	WEST CENTRAL	CENTRAL	EAST CENTRAL	SOUTH WEST	SOUTH CENTRAL	SOUTH EAST	STATEWIDE	HENS/ <sup>a</sup> COCK	COCK <sup>b</sup> HARVEST
1995	26.0	63.2	37.6	44.7	54.3	54.3	43.7	27.8	43.2	44.6		
1996	54.7	61.8	29.5	45.2	49.8	59.4	29.8	19.5	28.2	43.4		
1997	46.1	62.0	41.2	37.3	54.7	47.4	31.7	28.8	41.3	44.8		
1998	74.2	56.7	43.1	33.9	49.6	53.9	18.1	15.7	41.7	44.6		
1999	42.7	33.6	21.6	19.5	37.9	36.0	17.5	12.9	27.0	29.1		
2000	60.6	33.3	14.9	29.0	50.3	37.0	25.5	19.3	22.0	34.3		
2001	22.4	16.0	6.2	8.4	22.0	19.0	12.0	7.3	4.6	13.9		
2002	47.0	42.9	13.6	32.0	49.9	32.0	15.7	11.7	22.6	31.7		
2003	81.2	67.3	20.7	36.1	61.2	35.6	29.3	21.8	28.2	44.9		
2004	54.4	34.4	19.0	21.5	35.6	24.4	24.9	19.6	24.4	29.7		
2005	63.5	42.3	25.3	32.0	49.9	25.9	28.9	12.6	23.5	35.1		
2006	48.3	36.1	18.4	23.7	36.8	20.4	20.3	9.0	20.0	27.0		
2007	41.3	35.0	20.1	26.0	36.2	25.0	12.8	5.6	19.8	25.8		
2008	49.4	25.4	9.1	21.2	18.6	7.4	5.7	4.4	5.3	17.5		
2009	35.5	16.6	2.6	23.5	19.1	9.3	10.0	4.8	10.1	15.4		
2010	29.6	16.2	4.7	8.8	11.7	5.3	6.1	1.8	6.6	10.8		
2011	11.1	7.3	2.4	5.5	10.2	5.9	6.3	2.9	4.7	6.6		
2012	16.3	10.9	1.3	3.5	12.3	6.3	4.4	4.0	5.4	7.8		
2013	14.3	9.0	2.7	5.2	7.1	4.2	2.5	4.4	6.3	6.5		
2014	29.3	18.1	2.6	20.8	19.9	13.0	6.5	9.8	19.8	16.3		
2015	42.4	22.5	8.1	23.6	36.4	16.7	11.3	8.2	27.8	23.2		
2016	33.0	24.1	11.2	20.5	30.9	15.4	8.7	7.8	22.2	20.4		
2017	25.8	15.1	5.3	13.0	22.7	12.0	6.8	5.8	15.5	14.4		
2018	25.9	18.1	13.1	22.7	37.4	12.2	8.7	12.3	22.2	20.2		
2019	23.3	20.9	12.8	26.4	27.3	9.1	7.3	6.8	12.3	17.0		
2020	28.5	22.9	24.4	25.4	20.9	13.6	7.3	6.4	28.2	20.0		
2021	28.8	30.6	19.7	31.6	25.5	10.3	4.9	8.3	10.3	19.7		
2022	31.5	26.7	16.0	29.2	22.4	13.3	4.9	6.6	12.6	18.9		
2023	38.3	28.3	26.9	27.3	25.6	10.1	12.7	8.3	13.3	21.9		
<b>Mean</b>												
10 Year	30.7	22.7	14.0	24.1	26.9	12.6	7.9	8.0	18.4	19.2		
Long-term	39.0	40.9	37.9	43.0	41.3	38.2	46.0	29.4	24.6	37.5	3.4	69%

YEAR	NORTH WEST	NORTH CENTRAL	NORTH EAST	WEST CENTRAL	CENTRAL	EAST CENTRAL	SOUTH WEST	SOUTH CENTRAL	SOUTH EAST	STATEWIDE	HENS/ <sup>a</sup> COCK	COCK <sup>b</sup> HARVEST
<b>Change (%)</b>												
2022	21.4	5.9	68.7	-6.3	14.5	-23.6	160.2	25.8	5.0	15.9		
10 Year	24.8	24.5	92.4	13.7	-4.7	-19.5	60.7	3.2	-28.1	13.9		
Long-term	-1.9	-30.9	-29.0	-36.3	-37.9	-73.4	-72.4	-71.8	-46.0	-41.7		

Winter sex ratio (hens per cock).

<sup>b</sup>Percent cock harvest calculated as  $\frac{((\text{hens}/\text{cocks})-1)/(\text{hens}/\text{cock})}{1} * 100$  (Wooley, J.B. et al.1978. IA WL Res Bull No 24.)

\*Severe winter weather preceded the August counts in 1965, 75, 79, 01, 04 08, 10, 11. Abnormally wet weather occurred during 1973, 82, 84, 95, 99, 01, 08, 13 nest seasons. Winter hens per cock and cock harvest data are statewide estimates. Hens per cock counts were done the year succeeding the year listed.

**Table 2 Mean number of broods counted/30-mile route and average brood size (chicks/brood) on the August roadside survey.**

YEAR	NORTH WEST		NORTH CENTRAL		NORTH EAST		WEST CENTRAL		CENTRAL		EAST CENTRAL		SOUTH WEST		SOUTH CENTRAL		SOUTH EAST		STATEWIDE	
	No.	Size	No.	Size	No.	Size	No.	Size	No.	Size	No.	Size	No.	Size	No.	Size	No.	Size	No.	Size
1962	10.1	5.3	11.9	6.1	11.7	6.3	9.5	7.3	7.7	7.2	4.2	5.3	6.8	5.7	1.5	7.3	0.6	7.3	7.2	6.3
1963	12.9	6.9	14.2	5.5	11.8	6.0	12.2	5.8	8.4	5.4	5.8	6.1	15.4	6.5	3.5	5.0	2.4	5.2	9.5	5.9
1964	11.8	5.0	16.9	6.1	11.5	7.4	11.6	6.0	7.4	5.2	6.5	6.2	12.0	6.4	3.1	8.7	1.8	6.3	9.2	6.2
1965	5.9	5.6	8.0	6.2	5.7	5.7	8.7	5.0	4.4	6.1	4.8	7.6	13.3	5.8	5.9	6.0	2.3	6.0	6.2	6.0
1966	5.5	5.6	9.2	5.9	7.7	4.5	8.1	5.9	6.2	6.4	7.7	6.3	19.0	6.3	5.1	6.2	1.8	7.4	7.2	6.0
1967	3.9	4.6	6.7	5.3	7.1	5.4	5.3	4.8	7.0	5.0	7.5	5.5	13.9	5.4	6.0	5.6	2.3	5.1	6.3	5.2
1968	5.2	5.1	6.4	6.2	6.3	6.3	7.3	5.1	7.1	5.8	8.5	5.6	16.8	5.8	5.5	5.9	2.3	6.4	6.8	5.8
1969	2.3	4.9	5.4	6.0	7.5	6.7	5.2	5.8	7.0	5.6	8.7	5.0	10.8	5.4	6.4	5.5	3.3	5.4	6.0	5.5
1970	5.4	5.9	7.0	5.7	7.7	6.1	7.4	5.7	12.3	5.9	11.7	6.2	18.0	6.4	8.8	5.9	4.6	6.4	8.8	6.0
1971	4.2	5.5	6.3	5.4	6.8	5.0	9.6	4.9	10.7	6.2	14.0	5.8	15.0	5.7	7.4	5.4	6.8	5.8	8.5	5.5
1972	5.2	5.3	5.9	5.7	8.6	5.4	8.1	5.0	9.8	5.9	11.2	6.0	15.1	6.1	7.7	5.7	3.8	4.8	8.0	5.6
1973	6.4	4.6	7.2	5.6	8.8	5.5	8.6	4.7	11.8	5.1	13.0	5.6	9.7	5.4	7.5	5.9	4.1	5.5	8.6	5.3
1974	6.7	4.6	7.3	4.8	6.9	5.5	8.5	5.0	5.4	4.7	8.3	4.4	12.1	5.4	7.8	5.0	2.2	5.2	7.0	4.9
1975	1.4	5.4	4.1	5.0	8.3	4.9	4.7	5.3	6.4	4.8	9.1	5.1	7.4	5.4	6.5	5.8	4.4	5.2	5.7	5.2
1976	2.3	5.1	6.0	5.1	9.7	5.1	6.3	5.2	8.9	4.6	11.3	5.3	9.7	5.2	7.8	5.4	3.9	4.9	7.2	5.1
1977	4.6	4.9	6.4	5.7	12.8	5.6	10.7	4.6	7.7	4.7	13.1	4.8	12.3	5.2	7.1	5.1	4.1	4.7	8.3	5.0
1978	5.9	5.2	3.5	5.4	9.1	5.4	9.9	5.0	6.9	5.4	8.8	5.5	11.1	5.5	7.4	5.5	4.0	5.8	7.1	5.4
1979	6.7	4.5	4.0	5.7	5.5	5.3	7.3	5.4	5.4	5.9	6.1	5.0	11.1	5.8	8.7	5.2	3.3	5.0	6.3	5.3
1980	8.1	4.9	9.4	5.2	12.1	5.2	16.6	4.9	11.3	5.0	9.9	4.8	13.5	4.5	11.6	5.3	5.8	5.2	10.7	5.0
1981	11.4	4.4	8.7	4.9	11.2	5.4	15.5	4.8	10.0	4.6	11.5	5.0	16.9	4.4	8.8	5.2	5.5	4.7	10.7	4.8
1982	4.4	4.3	4.1	5.3	6.2	4.9	8.9	4.7	3.6	5.6	3.0	4.5	6.9	4.3	6.8	5.4	2.9	4.2	5.0	4.9

YEAR	NORTH WEST		NORTH CENTRAL		NORTH EAST		WEST CENTRAL		CENTRAL		EAST CENTRAL		SOUTH WEST		SOUTH CENTRAL		SOUTH EAST		STATEWIDE	
	No.	Size	No.	Size	No.	Size	No.	Size	No.	Size	No.	Size	No.	Size	No.	Size	No.	Size	No.	Size
1983	1.6	4.7	1.9	4.9	3.1	5.2	2.8	4.9	1.8	5.4	3.6	5.4	5.9	5.3	7.5	5.9	3.8	5.8	3.4	5.3
1984	1.3	5.9	1.5	5.7	2.8	5.3	3.5	5.2	2.3	5.0	3.6	5.1	3.6	4.4	5.8	5.2	4.1	4.8	3.1	5.2
1985	3.5	5.4	4.2	5.3	4.9	6.1	5.8	5.3	5.4	5.5	3.9	5.4	8.9	5.7	12.2	5.3	5.7	6.1	6.0	5.5
1986	3.9	5.9	2.9	5.0	7.1	5.5	5.6	3.8	4.1	4.7	4.9	4.4	8.1	4.9	10.3	5.3	3.8	4.9	5.4	5.0
1987	5.8	6.2	5.0	6.2	8.5	5.8	9.3	5.1	6.3	4.9	4.8	5.6	9.9	5.0	10.5	5.4	5.7	5.4	7.1	5.5
1988	5.3	5.1	5.0	5.6	5.8	6.6	9.7	5.1	4.0	6.1	3.5	5.8	7.8	4.9	8.5	4.9	4.3	5.5	5.7	5.5
1989	3.8	5.2	5.0	5.9	8.2	5.1	10.9	5.3	8.1	5.4	5.5	5.4	6.9	4.6	6.5	5.2	5.5	5.9	6.5	5.4
1990	5.2	5.0	6.9	5.4	9.6	5.4	9.8	4.5	6.6	4.9	3.9	4.7	7.3	4.9	5.8	4.4	4.1	5.2	6.4	4.9
1991	5.8	4.7	6.4	5.4	7.7	5.4	12.5	4.8	7.1	4.3	4.9	5.0	11.5	4.2	7.9	5.1	6.6	5.2	7.5	4.9
1992	4.3	4.0	7.1	5.6	4.6	4.9	6.9	4.4	6.8	4.4	5.7	5.2	5.1	4.1	4.2	3.9	5.6	4.7	5.7	4.6
1993	2.4	4.8	3.4	5.4	2.3	4.9	8.9	5.1	3.8	5.2	3.6	5.4	5.8	4.3	3.7	5.5	4.2	5.2	4.0	5.1
1994	7.5	4.6	11.2	5.5	5.7	4.5	14.2	4.5	9.4	4.8	10.0	5.4	8.9	4.1	6.8	5.4	8.7	5.4	9.1	5.0
1995	4.8	4.6	10.1	5.0	5.7	5.4	8.1	4.5	9.4	4.5	7.4	6.1	7.3	4.6	4.3	5.5	6.1	5.6	7.2	5.1
1996	9.1	4.6	9.6	5.0	4.8	4.5	7.4	4.6	8.5	4.9	8.9	5.6	5.6	4.0	3.7	3.7	4.0	4.8	7.1	4.7
1997	6.8	5.7	9.1	5.1	6.7	5.1	5.9	5.0	8.6	5.1	7.0	5.4	5.7	3.7	3.8	6.9	6.1	6.3	6.8	5.4
1998	14.1	4.2	9.6	4.7	6.7	5.4	6.1	4.7	8.3	4.6	8.8	5.2	4.3	3.2	2.7	4.3	6.3	5.1	7.7	4.6
1999	7.2	4.5	5.5	4.1	3.5	4.6	3.5	4.2	6.1	4.6	4.7	5.8	3.1	3.8	1.9	5.2	4.1	5.9	4.6	4.7
2000	11.3	4.7	5.5	4.9	2.4	4.7	4.7	5.3	8.8	4.2	5.7	5.2	4.4	4.3	3.5	3.7	3.3	5.2	5.8	4.7
2001	3.3	4.6	2.7	4.6	0.9	5.4	1.6	3.2	3.3	4.9	2.9	5.6	2.3	3.8	1.2	4.4	0.7	3.4	2.2	4.5
2002	7.4	5.1	7.8	5.0	2.4	4.7	5.3	4.8	7.9	5.0	4.5	5.9	3.5	3.4	1.8	5.5	3.6	5.5	5.2	5.1
2003	13.9	4.5	10.3	5.4	4.1	3.7	5.6	5.4	10.3	4.6	5.6	5.3	4.7	4.9	3.5	4.6	4.1	5.3	7.3	4.9
2004	9.5	4.1	6.0	4.0	2.7	4.5	4.1	3.4	6.2	4.1	3.5	5.0	4.8	3.7	3.4	4.4	4.6	4.2	5.2	4.1
2005	11.7	4.2	7.2	4.3	4.2	4.7	6.1	3.9	8.3	4.6	3.5	5.2	4.9	4.2	2.1	4.8	3.9	5.1	6.0	4.6
2006	7.7	4.8	7.1	4.1	3.4	4.0	4.7	4.0	6.6	4.3	4.0	4.1	4.1	3.9	1.4	4.5	3.1	5.1	4.8	4.3
2007	7.7	4.2	6.1	4.3	3.4	4.1	4.7	4.7	6.4	4.3	4.5	4.3	2.4	3.6	0.8	4.2	3.3	5.1	4.6	4.3
2008	8.6	4.6	4.0	4.2	1.5	3.4	2.9	4.9	2.7	4.4	1.1	5.0	0.8	3.5	0.7	4.3	0.8	3.9	2.7	4.4
2009	5.5	4.4	2.9	3.4	0.6	2.2	3.9	4.6	2.7	5.1	1.2	6.4	1.9	4.1	0.8	4.6	2.2	3.6	2.5	4.4
2010	4.9	4.0	2.7	4.5	1.0	4.0	1.8	3.8	2.1	3.9	0.8	5.0	0.9	4.8	0.5	2.5	1.2	4.2	1.9	4.0
2011	1.7	4.1	1.2	4.2	0.4	4.8	0.9	4.0	1.8	4.0	1.0	4.9	1.1	5.0	0.4	2.0	0.7	3.0	1.1	4.8
2012	2.7	4.9	1.6	5.2	0.3	3.4	0.6	3.9	1.9	5.1	1.0	6.0	0.8	3.7	0.6	5.0	0.8	5.7	1.2	4.9
2013	2.1	4.5	1.4	4.0	0.5	3.3	0.8	4.4	1.2	4.7	0.7	4.8	0.4	3.0	0.6	4.7	0.9	4.8	1.0	4.4
2014	4.7	4.5	3.3	4.6	0.5	2.8	3.4	4.5	3.2	4.7	1.8	5.5	1.2	3.1	1.8	4.4	3.1	4.6	2.7	4.4
2015	6.7	4.9	3.6	4.6	1.2	6.0	3.6	4.9	6.5	3.9	2.6	3.9	1.8	4.4	1.5	3.9	5.0	4.6	3.8	4.5

YEAR	NORTH WEST		NORTH CENTRAL		NORTH EAST		WEST CENTRAL		CENTRAL		EAST CENTRAL		SOUTH WEST		SOUTH CENTRAL		SOUTH EAST		STATEWIDE	
	No.	Size	No.	Size	No.	Size	No.	Size	No.	Size	No.	Size	No.	Size	No.	Size	No.	Size	No.	Size
2016	5.6	4.5	4.3	4.0	1.9	4.0	3.5	4.5	4.5	5.3	2.5	4.4	1.2	4.7	1.1	4.3	4.0	4.0	3.4	4.5
2017	4.2	4.5	2.5	4.2	1.0	3.2	2.0	4.2	4.3	4.3	1.6	5.0	0.9	3.6	0.9	4.1	2.7	4.4	2.4	4.3
2018	4.2	4.0	2.4	4.9	2.4	4.1	4.0	4.0	5.9	4.4	1.8	4.1	1.4	3.2	1.8	5.5	3.8	4.4	3.2	4.3
2019	3.8	4.0	3.0	5.2	1.9	4.4	4.0	4.6	4.3	4.3	1.2	5.0	1.2	4.0	0.9	4.7	1.7	3.7	2.6	4.5
2020	4.7	4.2	3.6	4.7	3.7	4.9	4.2	4.2	3.5	3.8	1.8	5.1	0.9	4.6	1.1	4.1	3.8	5.2	3.1	4.5
2021	5.0	4.5	5.0	4.3	3.1	4.9	5.1	4.4	4.3	4.1	1.7	3.9	0.9	3.6	1.2	4.0	1.6	3.4	3.2	4.2
2022	4.4	5.0	4.3	4.2	2.8	3.8	4.3	4.4	3.7	3.9	2.4	4.0	0.8	4.3	1.2	3.5	1.5	5.2	2.9	4.3
2023	5.4	4.4	4.5	4.1	3.8	5.0	4.3	4.2	4.1	4.8	1.6	4.1	2.0	3.7	1.3	4.4	1.9	4.4	3.3	4.4
<b>Mean</b>																				
10 Year	4.9	4.5	3.6	4.5	2.2	4.3	3.9	4.4	4.4	4.3	1.9	4.5	1.2	3.9	1.3	4.3	2.9	4.4	3.1	4.4
Long-term	6.0	4.8	5.9	5.1	5.3	5.0	6.6	4.8	6.2	4.9	5.4	5.2	7.0	4.6	4.5	5.0	3.6	5.1	5.6	5.0
<b>Change %</b>																				
2022	24	-11	4	-1	38	32	2	-5	10	22	-36	3	159	-14	9	27	29	-15	14	2
10 Year	12	-1	23	-8	73	16	13	-4	-8	9	-18	-9	62	-6	3	2	-35	1	8	0
Long-term	-9	-9	-24	-18	-29	1	-34	-11	-35	-3	-71	-22	-71	-21	-71	-12	-48	-13	-41	-12

**Table 3 Mean number of bobwhite quail and white-tailed jackrabbits counted per 30-mile route on the August roadside survey.**

YEAR	QUAIL PER ROUTE										STATEWIDE	JACKRABBIT STATEWIDE
	NORTH WEST	NORTH CENTRAL	NORTH EAST	WEST CENTRAL	CENTRAL	EAST CENTRAL	SOUTH WEST	SOUTH CENTRAL	SOUTH EAST	STATEWIDE		
1962	0.00	0.00	0.00	1.82	0.23	0.18	0.64	1.55	2.00	0.70	0.382	
1963	0.00	0.00	0.08	0.50	0.44	0.13	0.54	5.50	3.13	1.08	0.412	
1964	0.00	0.00	0.43	0.50	0.48	0.60	0.83	4.69	4.68	1.33	0.517	
1965	0.81	0.04	0.32	0.28	0.25	0.81	2.08	6.76	8.55	2.25	0.346	
1966	0.22	0.00	0.12	0.11	0.44	3.05	2.58	6.65	7.59	2.29	0.348	
1967	0.38	0.00	0.16	0.56	0.20	1.81	2.17	5.48	8.09	2.10	0.599	
1968	0.00	0.00	0.28	0.17	0.65	2.68	3.46	5.81	5.55	2.06	0.278	
1969	0.00	0.00	0.00	0.06	1.68	3.00	6.83	8.58	5.40	2.60	0.308	
1970	0.00	0.00	0.00	0.00	0.17	1.64	10.75	10.15	7.36	2.95	0.155	
1971	0.00	0.00	0.00	0.06	0.52	1.35	11.42	6.82	6.79	2.64	0.345	
1972	0.00	0.00	0.00	0.26	0.25	1.13	10.27	6.84	3.80	2.26	0.300	
1973	0.00	0.00	0.00	0.21	1.24	1.29	13.31	6.58	5.55	2.54	0.202	

YEAR	QUAIL PER ROUTE										JACKRABBIT STATEWIDE
	NORTH WEST	NORTH CENTRAL	NORTH EAST	WEST CENTRAL	CENTRAL	EAST CENTRAL	SOUTH WEST	SOUTH CENTRAL	SOUTH EAST	STATEWIDE	
1974	0.00	0.00	0.11	0.25	0.13	1.00	8.07	6.39	5.13	2.11	0.072
1975	0.00	0.00	0.00	2.00	0.30	0.92	7.64	3.78	5.64	1.98	0.108
1976	0.00	0.00	2.00	2.21	0.16	2.04	2.40	7.39	4.68	2.19	0.109
1977	0.00	0.00	0.41	0.21	0.68	1.55	5.40	12.63	3.96	2.69	0.085
1978	0.00	0.00	1.06	1.37	0.17	0.50	2.73	8.42	3.40	1.87	0.141
1979	0.04	0.00	0.88	0.00	0.35	0.32	2.75	2.00	0.30	0.66	0.158
1980	0.36	0.00	0.00	0.68	1.39	1.00	5.27	7.88	2.61	2.05	0.149
1981	0.40	0.00	1.00	0.21	0.10	1.64	7.00	11.84	2.43	2.60	0.310
1982	0.00	0.00	0.67	0.05	0.00	0.14	0.87	2.64	2.83	0.79	0.099
1983	0.08	0.08	0.28	0.16	0.50	0.57	1.64	7.32	1.87	1.44	0.055
1984	0.00	0.00	0.22	0.80	0.03	0.00	1.13	2.40	1.57	0.66	0.078
1985	0.00	0.00	1.44	0.00	0.10	0.00	1.27	6.24	3.30	1.37	0.074
1986	0.00	0.00	0.00	0.37	0.03	0.14	1.73	8.16	2.09	1.42	0.118
1987	0.00	0.00	0.33	0.47	0.00	0.74	3.93	14.52	4.17	2.70	0.123
1988	0.00	0.00	0.44	0.94	0.00	0.00	4.87	8.46	4.13	1.96	0.173
1989	0.04	0.00	0.33	1.06	0.10	0.70	6.07	7.67	3.17	1.91	0.223
1990	0.00	0.00	1.00	0.72	0.13	1.04	2.93	6.25	2.21	1.48	0.188
1991	0.08	0.00	0.47	0.72	0.13	0.52	3.13	5.54	2.33	1.34	0.068
1992	0.12	0.00	0.22	1.50	0.07	0.96	2.43	2.83	2.71	1.07	0.143
1993	0.00	0.00	0.37	0.50	0.03	0.78	5.07	2.13	1.61	0.96	0.030
1994	0.08	0.00	0.00	0.65	0.00	0.87	9.19	3.21	3.04	1.58	0.155
1995	0.08	0.00	0.63	0.17	0.06	0.86	2.53	5.54	3.22	1.37	0.058
1996	0.08	0.00	0.21	0.28	0.09	0.71	2.73	0.88	0.65	0.51	0.092
1997	0.00	0.00	0.00	0.00	0.07	1.24	4.27	2.25	0.50	0.77	0.098
1998	0.00	0.00	0.00	0.00	0.07	1.48	1.20	2.30	1.81	0.72	0.086
1999	0.00	0.00	0.05	0.00	0.00	0.13	1.07	2.50	1.50	0.57	0.060
2000	0.00	0.00	0.00	0.20	0.47	0.17	4.40	0.83	0.41	0.57	0.029
2001	0.00	0.00	0.00	0.00	0.09	0.76	1.31	0.50	0.32	0.29	0.053
2002	0.00	0.00	0.00	0.70	0.03	0.27	1.06	0.88	0.96	0.39	0.034
2003	0.00	0.00	0.00	0.00	0.22	0.14	3.27	3.92	1.36	0.89	0.033
2004	0.00	0.00	0.50	0.05	0.19	0.55	2.19	2.64	3.19	0.93	0.033
2005	0.00	0.00	0.00	0.09	0.53	0.00	1.71	2.52	1.64	0.69	0.019
2006	0.00	0.00	0.00	0.32	0.03	0.52	1.65	2.16	3.22	0.82	0.052

YEAR	QUAIL PER ROUTE										JACKRABBIT STATEWIDE
	NORTH WEST	NORTH CENTRAL	NORTH EAST	WEST CENTRAL	CENTRAL	EAST CENTRAL	SOUTH WEST	SOUTH CENTRAL	SOUTH EAST	STATEWIDE	
2007	0.04	0.00	0.00	0.78	0.00	1.40	0.63	1.52	3.30	0.81	0.019
2008	0.00	0.00	0.00	0.13	0.00	0.00	2.00	1.04	1.26	0.45	0.000
2009	0.58	0.00	0.00	0.67	0.00	0.18	1.22	2.24	1.67	0.72	0.005
2010	0.00	0.00	0.56	0.30	0.00	0.05	0.44	0.50	1.32	0.33	0.000
2011	0.00	0.00	0.00	0.00	0.00	0.35	0.07	1.28	0.22	0.22	0.019
2012	0.00	0.00	0.00	0.00	0.07	0.00	1.75	1.68	0.13	0.36	0.005
2013	0.00	0.00	0.05	0.04	0.00	0.10	0.78	1.68	0.78	0.36	0.009
2014	0.00	0.00	0.00	0.00	0.59	0.00	3.65	2.71	1.76	0.86	0.028
2015	0.00	0.00	0.00	0.81	0.00	0.30	4.06	3.88	4.58	1.42	0.019
2016	0.15	0.07	0.00	1.14	0.07	0.41	5.83	5.50	3.00	1.65	0.005
2017	0.00	0.00	0.00	0.33	0.00	0.00	4.41	4.56	1.70	1.11	0.005
2018	0.00	0.00	0.00	1.76	0.65	0.14	4.06	3.46	3.17	1.37	0.019
2019	0.00	0.00	0.00	0.52	0.09	1.32	1.94	2.88	1.25	0.84	0.005
2020	0.08	0.00	0.90	0.17	0.06	0.13	3.28	1.76	1.00	0.72	0.005
2021	0.00	0.00	0.00	0.17	0.59	0.00	1.50	1.20	0.17	0.39	0.005
2022	0.00	0.00	0.00	0.87	0.03	0.13	4.39	2.46	0.58	0.82	0.000
2023	0.00	0.00	0.10	0.87	0.03	1.30	2.17	2.76	0.04	0.74	0.018
<b>Mean</b>											
10 Year	0.02	0.01	0.10	0.67	0.21	0.37	3.53	3.12	1.73	0.99	0.01
Long-term	0.06	0.00	0.25	0.48	0.24	0.74	3.55	4.53	2.84	1.31	0.124
<b>Change (%)</b>											
2022							-50.6	12.3	-92.8	-9.7	
10 Year						249.9	-38.6	-11.4	-97.6	-25.7	65.1
Long-term						76.8	-38.9	-39.1	-98.5	-43.9	-85.4

Table 4 Mean number of gray partridge counted per 30-mile route on the August roadside survey.

YEAR	NORTH WEST	NORTH CENTRAL	NORTH EAST	WEST CENTRAL	CENTRAL	EAST CENTRAL	SOUTH WEST	SOUTH CENTRAL	SOUTH EAST	STATEWIDE
1962	5.77	0.87	0.00	0.82	0.08	0.00	0.00		0.00	0.89
1963	4.67	2.92	0.00	0.69	0.00	0.00	0.00	0.00	0.00	0.91
1964	4.63	2.11	0.00	0.00	0.00	0.00	0.00	0.00	0.00	0.79
1965	2.38	1.52	0.00	0.11	0.00	0.00	0.00	0.00	0.00	0.48

YEAR	NORTH WEST	NORTH CENTRAL	NORTH EAST	WEST CENTRAL	CENTRAL	EAST CENTRAL	SOUTH WEST	SOUTH CENTRAL	SOUTH EAST	STATEWIDE
1966	2.70	4.96	0.00	0.00	0.76	0.00	0.00	2.05	0.00	1.30
1967	3.33	1.13	0.00	1.11	0.20	0.00	0.00	0.00	0.00	0.66
1968	4.13	1.30	0.00	0.06	0.00	0.00	0.00	0.00	0.00	0.68
1969	1.25	1.14	0.00	0.17	0.32	0.00	0.00	0.00	0.00	0.38
1970	8.43	4.00	0.00	0.00	0.75	0.00	0.00	0.00	0.00	1.66
1971	7.09	3.55	0.00	0.29	0.00	0.00	0.00	0.00	0.00	1.44
1972	8.92	5.44	0.00	0.47	0.61	0.00	0.00	0.00	0.20	1.92
1973	6.57	7.08	0.22	0.32	0.52	0.00	0.00	0.00	0.00	1.87
1974	9.00	4.79	0.00	0.30	0.33	0.00	0.00	0.00	0.00	1.82
1975	8.50	6.73	0.00	0.00	0.19	0.00	0.00	0.00	0.00	1.98
1976	9.50	7.20	0.00	0.84	0.23	0.00	0.00	0.00	0.00	2.14
1977	22.04	13.88	0.00	1.58	0.55	0.00	0.00	0.00	0.00	4.70
1978	17.23	7.68	0.11	1.42	2.43	0.00	0.00	0.00	0.00	3.73
1979	20.28	19.32	0.18	1.58	2.90	0.77	0.00	0.00	0.00	5.59
1980	35.04	28.08	0.11	3.00	4.03	0.82	0.00	0.00	0.00	8.81
1981	31.44	23.60	1.78	5.00	4.19	0.32	0.00	0.00	0.00	8.08
1982	18.48	10.16	0.94	3.37	1.87	0.00	0.00	0.00	0.00	4.21
1983	8.04	8.88	0.72	1.84	1.87	0.65	0.00	0.00	0.00	2.65
1984	14.16	13.24	2.11	1.05	3.03	1.05	0.00	0.00	0.00	4.22
1985	26.84	25.23	8.06	10.68	9.26	1.18	0.00	0.00	0.00	9.75
1986	29.48	21.04	10.00	5.79	11.13	2.41	0.13	0.00	0.00	9.62
1987	36.88	35.08	10.56	17.00	20.32	3.17	0.00	0.00	0.61	14.93
1988	42.84	48.65	15.61	17.83	25.07	4.48	0.20	0.38	1.39	19.00
1989	36.54	31.82	14.39	12.06	37.48	0.96	2.07	0.38	0.70	17.27
1990	18.40	20.12	16.68	5.89	6.93	5.52	1.00	0.38	0.88	8.75
1991	13.88	7.52	4.16	3.17	4.23	4.00	0.87	0.54	0.58	4.59
1992	5.15	4.76	6.67	2.61	3.77	4.17	0.07	1.46	2.05	3.58
1993	1.33	1.39	0.84	2.00	1.19	0.17	0.00	0.13	0.17	0.85
1994	7.92	14.48	4.47	10.41	8.29	5.39	0.13	0.29	0.35	6.17
1995	3.72	4.86	4.11	1.28	2.52	3.18	0.00	0.29	0.78	2.47
1996	4.42	6.64	3.00	2.61	1.81	1.24	0.00	0.00	0.00	2.37
1997	9.00	7.33	6.47	3.16	10.77	3.95	0.00	0.00	0.36	5.10
1998	23.00	13.96	9.17	3.58	3.36	1.24	0.07	0.00	0.05	6.42
1999	11.41	2.75	2.11	1.84	3.68	0.52	0.00	0.00	0.09	2.83



YEAR	NORTH WEST	NORTH CENTRAL	NORTH EAST	WEST CENTRAL	CENTRAL	EAST CENTRAL	SOUTH WEST	SOUTH CENTRAL	SOUTH EAST	STATEWIDE
2000	6.54	4.75	0.90	2.05	4.00	1.74	0.00	0.00	0.00	2.53
2001	3.23	1.30	3.44	2.75	3.94	1.33	0.13	0.00	0.00	1.90
2002	7.04	2.04	2.94	4.00	5.88	1.23	0.00	0.00	0.00	2.82
2003	6.77	3.04	3.20	1.50	7.00	0.13	0.00	0.00	0.00	2.76
2004	7.77	2.30	1.90	0.86	3.25	1.00	0.00	0.04	0.00	2.12
2005	9.31	3.59	1.80	2.68	3.53	1.83	0.00	0.00	0.36	2.79
2006	2.50	4.96	2.10	2.14	3.53	0.86	0.00	0.00	0.39	2.01
2007	2.19	2.93	2.30	1.96	2.90	0.85	0.00	0.28	0.00	1.62
2008	2.39	4.11	0.00	1.09	0.40	0.20	0.00	0.12	0.00	1.03
2009	2.92	1.39	2.29	1.57	1.83	0.00	0.00	0.00	0.21	1.17
2010	1.15	1.69	1.83	0.83	1.40	1.26	0.00	0.00	0.00	0.93
2011	2.46	4.19	0.47	0.24	1.16	0.61	0.00	0.00	0.00	1.15
2012	2.50	3.56	1.33	0.71	3.45	0.05	0.06	0.00	0.00	1.47
2013	1.00	2.00	1.65	1.09	0.63	0.81	0.00	0.00	0.00	0.81
2014	1.81	7.74	2.65	1.91	2.53	0.87	0.00	0.00	0.00	2.13
2015	3.80	12.41	3.37	1.19	4.53	1.00	0.00	0.00	0.00	3.26
2016	5.73	7.22	5.26	1.59	2.39	1.55	0.00	0.00	0.00	2.76
2017	2.04	4.69	3.90	0.14	5.16	0.00	0.00	0.00	0.00	1.99
2018	1.62	4.22	2.00	2.29	4.77	2.27	0.00	0.00	0.08	2.09
2019	1.13	2.78	3.10	1.52	2.81	0.05	0.00	0.00	0.00	1.35
2020	1.58	3.33	5.05	0.39	4.03	1.83	0.00	0.00	0.00	1.90
2021	3.27	3.89	4.05	0.44	4.09	1.04	0.00	0.00	0.00	2.00
2022	2.77	4.46	3.00	0.09	3.06	0.91	0.00	0.00	0.00	1.71
2023	5.14	6.26	1.75	1.30	4.38	0.65	0.00	0.00	0.00	2.42
<b>Mean</b>										
10 Year	2.89	5.70	3.41	1.09	3.75	1.02	0.00	0.00	0.01	2.16
Long-term	9.86	8.45	2.95	2.55	4.12	1.08	0.08	0.10	0.15	3.57
<b>Change (%)</b>										
2022	85.7	40.3	-41.7	1398.9	42.8	-28.6				41.9
10 Year	78.1	9.8	-48.7	20.0	15.9	-35.9				12.2
Long-term	-47.8	-25.9	-40.6	-48.9	6.2	-39.9				-32.1

**Table 5 Mean number of cottontail rabbits counted per 30-mile route on the August roadside survey.**

<b>YEAR</b>	<b>NORTH WEST</b>	<b>NORTH CENTRAL</b>	<b>NORTH EAST</b>	<b>WEST CENTRAL</b>	<b>CENTRAL</b>	<b>EAST CENTRAL</b>	<b>SOUTH WEST</b>	<b>SOUTH CENTRAL</b>	<b>SOUTH EAST</b>	<b>STATEWIDE</b>
1962	3.2	2.7	5.5	9.8	5.1	6.2	5.1	8.1	9.3	6.0
1963	8.9	4.4	4.2	10.8	4.9	6.9	8.0	9.9	12.8	7.9
1964	2.4	2.3	2.0	11.3	5.7	3.1	10.2	19.4	14.0	7.6
1965	3.1	3.0	3.7	7.9	3.1	4.0	16.2	24.3	11.1	8.1
1966	2.0	3.2	6.5	9.7	5.9	5.0	30.2	31.7	9.5	10.3
1967	2.8	2.4	4.4	6.9	6.1	4.0	18.8	16.3	10.9	7.5
1968	1.9	3.3	4.0	6.9	5.3	5.7	17.7	17.5	8.5	7.4
1969	2.0	2.2	5.0	3.4	2.5	5.6	16.6	18.0	6.8	6.3
1970	1.4	2.0	4.3	2.7	1.7	3.6	12.5	11.3	4.7	4.4
1971	1.9	1.4	3.9	3.7	2.8	4.2	14.8	16.5	5.6	5.4
1972	2.8	1.7	2.7	3.9	2.3	6.4	11.7	14.8	4.7	5.5
1973	2.2	2.6	3.7	3.9	4.2	6.0	13.8	14.3	6.1	5.8
1974	2.1	1.9	4.4	3.6	2.0	3.9	5.8	8.4	6.0	4.1
1975	1.3	1.2	2.5	2.6	1.4	3.6	5.1	7.0	5.2	3.2
1976	1.3	1.6	5.9	7.3	4.2	5.5	9.3	16.4	8.9	6.4
1977	1.4	1.2	4.0	2.2	1.9	5.1	7.9	11.7	5.4	4.3
1978	3.8	2.0	6.9	4.7	3.7	5.5	12.7	14.0	5.2	6.2
1979	3.2	1.7	3.3	4.1	2.7	2.3	5.6	8.2	2.5	3.6
1980	2.3	3.0	2.1	4.2	4.2	1.8	5.5	9.8	4.9	4.2
1981	3.4	4.6	6.4	5.2	3.2	7.4	11.1	21.1	9.0	7.8
1982	2.4	2.3	2.7	4.4	2.5	4.9	7.7	19.5	11.7	6.4
1983	3.1	2.5	6.4	4.2	3.1	5.0	7.2	17.6	12.7	6.8
1984	2.0	1.4	3.0	4.2	2.6	4.0	3.5	14.7	14.0	5.6
1985	3.2	2.7	3.9	3.8	4.4	5.5	7.1	22.9	12.0	7.4
1986	3.0	2.6	4.6	4.3	3.8	3.8	9.7	25.2	12.7	7.7
1987	4.1	3.5	3.2	6.3	4.4	4.3	8.1	34.4	7.7	8.6
1988	3.1	1.8	2.0	4.8	2.6	2.5	4.6	12.8	6.7	4.5
1989	2.4	2.4	4.6	5.2	2.9	4.3	6.3	13.5	8.5	5.4
1990	2.7	3.9	7.0	7.7	5.5	7.3	9.2	26.0	14.7	9.2
1991	2.4	1.8	3.4	5.1	2.5	3.3	7.0	16.3	9.1	5.5
1992	2.6	3.8	4.0	4.8	4.1	3.6	7.1	13.7	12.4	6.0
1993	1.3	1.8	3.9	6.5	2.2	5.0	6.7	15.4	10.1	5.5
1994	2.2	1.9	5.4	5.4	3.3	7.4	8.9	14.4	10.4	6.3
1995	3.2	4.0	3.8	5.5	4.8	6.5	13.0	15.7	9.5	7.0

YEAR	NORTH WEST	NORTH CENTRAL	NORTH EAST	WEST CENTRAL	CENTRAL	EAST CENTRAL	SOUTH WEST	SOUTH CENTRAL	SOUTH EAST	STATEWIDE
1996	3.6	3.7	5.8	5.2	3.7	6.3	6.4	13.8	8.5	6.2
1997	2.1	2.4	5.2	2.9	3.4	6.2	6.0	11.8	5.1	4.9
1998	2.0	2.7	5.1	3.1	3.7	6.3	5.8	10.4	7.5	5.1
1999	4.1	2.3	5.1	5.0	4.7	9.1	7.9	10.6	6.0	5.9
2000	2.4	2.0	4.9	4.2	4.9	6.9	7.4	19.3	7.2	6.4
2001	1.6	1.6	1.3	2.1	3.0	3.5	5.3	12.0	4.1	3.8
2002	2.7	2.2	2.7	3.7	4.8	6.5	3.8	11.2	9.3	5.3
2003	5.0	3.9	5.7	6.9	8.3	8.0	9.1	21.4	11.0	8.8
2004	3.0	3.3	5.7	4.2	3.9	6.1	8.7	24.9	14.6	8.1
2005	4.7	2.9	5.7	5.0	4.6	3.7	12.6	12.1	7.0	6.2
2006	3.8	2.8	5.2	5.6	4.3	5.8	8.4	14.9	7.8	6.4
2007	1.7	2.6	4.2	3.6	2.8	6.1	5.7	6.1	8.0	4.3
2008	4.0	2.8	2.6	6.1	5.1	3.6	8.8	16.9	7.0	6.3
2009	2.2	1.3	3.7	4.7	4.0	4.5	10.3	9.6	6.1	5.0
2010	2.9	0.8	2.9	2.7	1.6	2.7	4.3	5.1	5.5	3.1
2011	1.1	1.0	2.8	2.5	2.4	2.0	1.9	4.3	1.7	2.2
2012	2.0	1.0	1.9	1.2	1.8	2.0	1.9	3.0	3.3	2.0
2013	2.3	3.0	3.5	4.1	4.1	6.9	2.5	11.4	8.2	5.1
2014	2.3	2.6	4.5	6.9	9.7	7.9	4.5	18.9	12.2	7.8
2015	4.0	3.7	4.1	5.1	6.9	6.8	5.7	15.8	11.3	7.2
2016	3.2	2.4	4.9	4.0	4.9	5.5	3.9	11.9	5.7	5.2
2017	1.6	2.0	5.5	3.6	6.4	8.7	6.5	9.3	5.8	5.4
2018	1.9	2.1	6.4	5.4	7.6	10.2	9.2	13.1	6.6	6.8
2019	1.5	3.3	5.6	4.8	7.3	4.9	5.2	10.8	6.7	5.7
2020	1.6	1.9	5.3	3.6	5.1	7.2	6.5	8.2	8.8	5.2
2021	2.2	1.6	4.7	3.3	5.1	6.0	4.9	6.1	5.7	4.3
2022	2.8	2.5	4.4	4.3	5.1	5.0	3.4	7.8	5.1	4.5
2023	2.0	2.2	4.4	6.1	4.1	6.2	5.1	7.6	5.0	4.6
<b>Mean</b>										
10 Year	2.3	2.4	5.0	4.7	6.2	6.8	5.5	11.0	7.3	5.7
Long-term	2.7	2.4	4.3	4.9	4.1	5.3	8.4	14.4	8.1	5.9
<b>Change (%)</b>										
2022	-26.5	-12.6	0.0	40.0	-20.1	23.3	48.4	-3.0	-2.5	2.4
10 Year	-11.9	-10.0	-12.4	28.9	-34.1	-9.1	-7.1	-30.6	-32.0	-18.4
Long-term	-23.5	-10.3	1.3	25.1	0.0	18.0	-39.0	-47.4	-38.9	-21.5

**Table 6 Harvest estimates from the Iowa small-game survey, resident and NR hunters combined.**

YEAR	PHEASANT	QUAIL	COTTONTAIL	JACK RABBIT	SQUIRREL	HUNS	DOVE
1942*	684,000						
1943	70,000	Spring season					
1958**	1,548,564						
1959	1,070,285						
1963	1,935,000	327,977	2,066,472	75,015	1,440,576	8,000	
1964	1,737,400	291,030	2,260,090	97,785	1,111,290	7,000	
1965	1,117,500	513,760	1,602,060	133,000	1,236,400	11,500	
1966	1,449,400	1,051,630	2,180,525	91,690	1,370,250	12,000	
1967	1,212,200	736,520	1,548,035	55,660	1,196,810	11,300	
1968	1,393,900	777,685	1,761,370	62,405	1,014,940	21,600	
1969	1,642,899	1,144,700	1,722,280	98,930	1,164,030	20,900	
1970	1,788,500	1,178,685	1,725,535	71,705	1,115,410	28,300	
1971	1,817,000	1,037,957	1,305,083	41,468	1,172,742	31,100	
1972	1,396,900	657,300	1,148,100	31,200	1,048,000	16,800	
1973	1,905,086	791,242	1,424,927	30,863	1,105,271	45,284	
1974	1,672,476	727,324	1,271,577	40,027	1,119,048	39,976	
1975	1,230,095	543,971	996,227	19,064	1,046,559	26,436	
1976	1,425,500	1,080,500	1,136,300	20,700	1,377,500	54,800	
1977	1,357,862	849,183	1,322,263	19,975	1,283,043	48,991	
1978	1,428,708	660,625	856,999	26,077	815,562	108,473	
1979	1,200,709	312,410	461,285	13,713	696,363	55,414	
1980	1,429,617	524,450	588,363	7,932	844,999	70,764	
1981	1,447,969	563,569	1,134,781	22,860	949,681	69,698	
1982	972,556	302,648	712,227	5,237	759,438	52,782	
1983	1,047,027	270,690	720,012	8,845	669,490	91,035	
1984	724,192	190,708	636,209	6,376	529,316	33,306	
1985	852,716	189,236	717,631	2,108	673,665	62,931	
1986	855,894	339,000	472,585	6,082	506,769	60,018	
1987	1,412,082	397,633	690,091	8,830	532,001	109,061	
1988	1,139,599	289,592	424,561	3,907	510,065	104,094	
1989	1,441,990	426,302	435,791	3,025	583,183	118,282	
1990	1,407,002	321,493	608,805	4,463	466,140	147,922	
1991	1,138,463	231,818	437,144	3,171	407,172	45,541	
1992	925,123	179,825	311,607	2,113	328,644	37,328	
1993	1,226,010	201,461	334,667	3,212	439,477	24,577	
1994	1,245,580	178,589	288,982	262	395,232	22,331	
1995	1,443,010	220,999	335,862	6,280	377,714	6,677	
1996	1,367,060	81,039	331,047	2,666	302,908	36,358	
1997	1,340,050	181,025	340,661	5,063	265,874	38,045	
1998	1,237,980	100,594	255,149	10,008	319,081	25,613	
1999 <sup>a</sup>	899,174	110,128	237,409	8,777	242,224	20,200	
2000 <sup>b</sup>	1,001,867	140,828	350,739	1,626	217,116	19,258	
2001	470,116	32,226	196,483	3,840	248,833	5,814	
2002	729,460	63,872	167,284	1,637	152,825	5,130	
2003	1,080,466	114,067	243,699	738	202,729	8,204	

YEAR	PHEASANT	QUAIL	COTTONTAIL	JACK RABBIT	SQUIRREL	HUNS	DOVE
2004	756,184	68,256	259,327	151	233,530	12,535	
2005	806,601	40,675	210,591	671	132,195	14,674	
2006	748,025	75,276	155,892	999	165,255	10,724	
2007	631,638	54,444	131,250	1,262	169,478	4,885	
2008	383,083	13,391	122,296	57	120,998	1,420	
2009	271,126	12,136	127,663	608	169,041	4,643	
2010	238,208	11,620	74,044	0	119,590	1,057	
2011	108,905	4,539	51,815	Closed	108,783	1,046	57,285
2012	158,099	20,474	70,003		158,615	611	94,864
2013	166,554	8,708	79,985		90,167	1,370	117,915
2014	215,816	10,705	102,379		110,600	451	137,927
2015	268,464	28,362	113,276		175,507	1,698	117,358
2016	244,769	24,366	99,464		95,805	510	131,468
2017 <sup>c</sup>	221,291	26,880	117,024		125,794	1,754	76,474
2018	319,811	47,305	123,309		80,843	6,220	118,855
2019	283,684	20,710	54,285		88,642	853	84,827
2020	299,548	17,475	75,247		76,622	1,538	81,740
2021	373,035	24,415	101,774		102,926	3,015	162,092
2022 <sup>d</sup>	259,884	21,140	35,745		57,092	1,207	144,462
<b>Mean</b>							
10 Year	265,286	22,776	88,408		105,682	1,748	115,271
Long-term	1,004,149	309,156	716,346	22,127	543,664	30,551	110,439
<b>Change (%)</b>							
2021	-30.3	-13.4	-64.9		-44.5	-60.0	-10.9
10 Year	-2.0	-7.2	-59.6		-46.0	-30.9	25.3
Long-term	-74.1	-93.2	-95.0		-89.5	-96.0	30.8

<sup>a</sup>Small Game Harvest Survey changed from a single (1998) to a double mailing (1999). Harvest estimates from 1999-present are more conservative than pre-1999 estimates.

<sup>b</sup>Survey methods changed account for unrealistic harvest (e.g. reports of 1 bird harvested for 60 days effort). Hunters asked to report days they hunted rather than trips.

<sup>c</sup>Survey methodology changed in 2017 for unrealistic harvest/day for quail, hun, rabbit, squirrel, dove.

<sup>d</sup>Poor sample from small game survey makes pheasant, cottontail, and squirrel estimates highly suspect.

\*The 1942-3 data from Conservation Magazine 1955 Vol 14 Issue 10.

\*\*Nomsen, RC. 1961. Results of the 1958 and 1959 Pheasant Hunter Survey. Ia Acad. Sci. 68:281-283.

**Table 7 Estimated hunters, harvest, and days hunted for pheasant and quail by residency status from the Iowa small game survey.**

Year	Pheasant						Quail					
	Resident			Non Resident			Resident			Non Resident		
	Hunters	Harvest	Days	Hunters	Harvest	Days	Hunters	Harvest	Days	Hunters	Harvest	Days
1987	178,203	1,129,395		33,915	251,613		70,026	181,378		13,727	64,760	
1988	170,323	902,226		33,682	237,373		59,230	212,646		13,792	76,946	
1989	173,017	1,122,951	1,285,878	38,569	319,039	130,363	69,591	381,321	407,078	10,380	44,981	26,052
1990	171,016	1,047,529	1,173,280	39,829	359,473	142,622	61,219	269,896	287,133	11,667	51,597	33,090
1991	161,741	852,158	1,129,983	40,578	286,305	131,035	49,713	184,195	294,665	11,271	47,623	32,124
1992	139,681	677,670	976,851	36,749	247,453	119,021	47,641	155,919	283,054	8,646	23,906	20,854
1993	138,619	999,149	1,075,277	27,642	226,857	104,643	43,027	175,793	220,174	6,318	25,667	20,139
1994	147,841	876,365	1,065,926	41,824	369,216	154,261	41,504	156,413	252,633	8,754	22,176	33,848
1995	155,308	1,118,638	1,265,982	44,995	324,368	166,760	39,653	193,544	248,962	11,185	27,454	41,944
1996	155,889	1,059,385	1,242,058	49,704	307,675	202,474	33,996	62,438	165,153	10,978	18,601	44,215
1997	154,855	1,037,620	1,103,360	50,349	302,432	191,869	24,927	134,418	142,433	10,546	46,607	48,988
1998	141,838	936,181	1,101,550	42,748	301,797	160,303	26,393	83,067	206,032	5,985	17,527	22,229
1999 <sup>a</sup>	142,521	684,596	878,967	39,152	214,578	106,880	32,306	86,058	156,855	8,811	24,070	21,305
2000 <sup>b</sup>	134,873	781,143	1,103,177	32,648	220,724	170,929	33,114	114,110	265,587	6,843	26,718	36,138
2001	99,125	352,469	675,141	23,781	117,620	118,899	20,459	24,812	133,206	4,132	7,414	19,144
2002	97,842	548,413	760,501	29,757	181,047	143,568	16,194	43,492	120,540	4,693	20,380	30,644
2003	108,819	849,898	960,472	33,414	230,568	162,018	19,937	99,971	151,928	4,958	14,096	22,053
2004	99,753	586,632	746,262	31,009	169,552	145,511	17,139	57,486	129,920	5,197	10,770	21,694
2005	107,255	641,957	818,755	28,937	164,644	130,174	15,277	33,714	81,293	3,301	6,961	16,217
2006	91,642	558,369	720,986	27,038	189,656	137,724	17,787	49,783	97,778	4,769	25,493	23,622
2007	85,803	481,754	600,541	23,426	149,884	121,862	14,227	42,799	115,104	4,007	11,645	18,183
2008	69,640	299,875	475,250	16,231	83,208	71,545	12,114	10,716	92,090	1,791	2,675	7,300
2009	60,708	217,816	423,511	13,309	53,310	60,041	8,237	11,098	59,202	1,942	1,038	10,672
2010	51,258	197,266	347,067	8,800	40,942	41,529	9,150	9,572	53,969	1,454	2,048	7,384
2011	39,515	75,897	219,515	6,460	33,008	30,407	8,574	3,664	51,577	862	875	3,537
2012	41,437	137,215	261,828	5,743	20,884	24,547	7,947	19,420	40,922	822	1,054	2,421
2013	34,688	140,348	244,096	6,293	26,206	26,897	6,165	8,467	47,635	320	241	1,261
2014	41,200	165,000	245,934	8,725	50,816	37,286	5,428	9,666	30,538	1,118	1,039	4,132
2015	46,679	212,858	298,709	9,480	55,606	44,391	8,189	26,081	47,166	1,573	2,281	6,310
2016	46,455	200,229	278,826	10,763	44,540	42,712	9,093	21,452	50,269	912	2,914	2,607
2017 <sup>c</sup>	45,007	177,762	295,820	9,908	43,529	48,905	6,581	25,373	32,853	938	1,507	3,523

Year	Pheasant						Quail					
	Resident			Non Resident			Resident			Non Resident		
	Hunters	Harvest	Days	Hunters	Harvest	Days	Hunters	Harvest	Days	Hunters	Harvest	Days
2018	43,707	266,237	289,762	10,196	53,574	45,586	7,811	72,791	50,648	2,071	4,514	6,268
2019	41,708	217,102	275,903	10,183	66,582	52,541	6,264	16,111	40,071	1,867	4,599	8,263
2020	50,867	238,798	326,925	11,064	60,750	44,787	6,876	16,068	56,936	1,028	1,407	4,575
2021	48,267	307,081	333,189	14,465	65,954	69,102	6,891	19,907	42,815	1,785	4,508	11,265
2022 <sup>d</sup>	40,225	201,501	275,699	11,359	58,383	55,128	7,358	16,067	47,785	2,750	5,073	15,476
<b>Mean</b>												
10 Year	43,880	212,692	286,486	10,244	52,594	46,734	7,066	23,198	44,672	1,436	2,808	6,368
Long-term	98,815	563,875	684,617	25,076	164,699	101,068	24,168	84,159	132,471	5,311	18,088	18,455
<b>Change (%)</b>												
2021	-16.7	-34.4	-17.3	-21.5	-11.5	-20.2	6.8	-19.3	11.6	54.1	12.5	37.5
10 Year	-8.3	-5.3	-3.8	10.9	11.0	18.0	4.1	-30.7	7.0	91.5	80.6	143.0
Long-term	-59.3	-64.3	-59.7	-54.7	-64.6	-45.5	-69.6	-80.9	-63.9	-48.2	-72.0	-16.1

<sup>a</sup>Small Game Harvest Survey changed from a single to a double mailing. Hunter estimates from 1999-present are more conservative than pre-1999 estimates.

<sup>b</sup>Survey methods changed to account for unrealistic harvest (reports of 1 bird harvested for 60 days effort). Hunters asked to report days they hunted rather than trips.

<sup>c</sup>Survey methodology changed for unrealistic harvest/day for quail, huns, rabbits, squirrel and doves

<sup>d</sup>Poor sample from small game survey makes pheasant, cottontail, and squirrel estimates highly suspect.

**Table 8 Sales of hunting-related licenses and stamps in Iowa.**

YEAR <sup>a</sup>	HUNTING	COMBO	FUR/ FISH GAME	FUR over 16	RESIDENT				NON-RESIDENT				HABITAT STAMP <sup>f</sup>	IA DUCK STAMP <sup>g</sup>	HUNT PRESERVE <sup>h</sup>	
					FURHARVESTER			RESIDENT HUNT <sup>d</sup>	LIFETIME over 65 <sup>j</sup>		HUNTING					TOTAL LICENSE <sup>e</sup>
					over 16 <sup>b</sup>	under 16	TOTAL <sup>c</sup>		Sold	Total	over 18	under 18				
1942	118,252	107,794					226,046					447				
1943	84,671	108,599					193,270					612				
1944	94,361	117,296					211,657					1,163				
1945	105,651	139,958					245,609					998				
1946	133,284	192,844					326,128					1,646				
1947	121,200	152,042					273,242					632				
1948	173,297	158,722					332,019					1,727				
1949	193,280	156,454					349,734					2,256				
1950	187,079	151,032					338,111					2,393				
1951	187,838	141,482					329,320					2,371				
1952	190,669	150,266					340,935					2,391				





YEAR <sup>a</sup>	HUNTING	COMBO	FUR/ FISH GAME	RESIDENT					NON-RESIDENT				HABITAT STAMP <sup>f</sup>	IA DUCK STAMP <sup>g</sup>	HUNT PRESERVE <sup>h</sup>	
				FUR over 16	FURHARVESTER			RESIDENT HUNT <sup>d</sup>	LIFETIME over 65 <sup>j</sup>		HUNTING					TOTAL LICENSE <sup>e</sup>
					over 16 <sup>b</sup>	under 16	TOTAL <sup>c</sup>		Sold	Total	over 18	under 18				
1985	118,163	90,281		25,156	25,156	3,519	28,675	208,444					22,977	233,779	37,681	729
1986	121,640	83,653	63	23,646	23,709	3,064	26,773	205,356					27,254	236,219	40,157	882
1987	134,155	78,285	8,234	20,689	28,923	3,338	32,261	220,674					35,676	259,350	43,357	1,112
1988	130,547	77,342	10,699	13,406	24,105	2,380	26,485	218,588					35,023	257,702	34,799	1,696
1989	134,894	81,795	9,435	8,976	18,411	1,530	19,941	226,124					40,197	271,342	32,920	1,499
1990	131,601	80,241	7,794	6,059	13,853	973	14,826	219,636					41,500	263,530	31,468	1,786
1991	127,432	81,977	7,791	6,417	14,208	719	14,927	217,200					45,792	266,845	32,537	1,454
1992	142,059	54,028	7,421	6,851	14,272	793	15,065	203,508					39,211	247,673	34,304	1,810
1993	137,489	52,416	8,061	6,611	14,672	829	15,501	197,966					29,231	232,298	31,741	2,137
1994	148,770	54,185	8,334	7,477	15,811	952	16,763	211,289					45,610	260,815	33,232	1,870
1995	146,497	55,367	8,863	6,480	15,343	903	16,246	210,727					48,028	263,531	34,903	2,467
1996	137,724	62,834	9,105	8,132	17,237	1,021	18,258	209,663					53,058	265,653	43,060	2,317
1997	135,010	66,398	10,122	8,208	18,330	1,066	19,396	211,530					52,730	269,443	38,275	2,516
1998	133,000	65,129	10,661	7,664	18,325	1,078	19,403	208,790					50,511	266,519	40,349	3,107
<b>1999*</b>		Discontinued			<b>15,804</b>	<b>1,004</b>	<b>16,808</b>	<b>206,210</b>	<b>2,885</b>	<b>3,951</b>	<b>42,379</b>	<b>2,086</b>	<b>44,465</b>	<b>253,943</b>	<b>42,588</b>	<b>2,772</b>
2000					12,793	1,936	14,729	200,995	1,642	5,593	39,067	1,901	40,968	245,351	40,913	2,898
2001					14,665	658	15,323	194,051	1,515	7,108	26,748	1,090	27,838	237,407	40,378	2,963
2002					14,235	644	14,879	189,138	2,339	9,447	36,728	1,532	38,260	229,829	37,574	3,282
2003					13,753	651	14,404	193,279	1,772	11,219	43,145	1,951	45,096	240,527	35,746	3,173
2004					13,906	701	14,607	190,154	1,786	13,005	41,159	1,847	43,006	235,336	34,611	3,254
2005					12,711	665	13,376	189,813	1,886	14,891	40,159	1,801	41,960	233,416	31,666	3,165
2006					13,796	746	14,542	188,628	1,973	16,864	39,038	1,815	40,853	231,284	31,982	3,370
2007					14,445	834	15,279	184,257	1,970	18,834	35,267	1,604	36,871	222,559	31,992	3,010
2008					14,673	850	15,523	177,723	2,074	20,908	28,427	1,167	29,594	208,461	30,560	2,665
2009					13,376	722	14,098	172,230	2,257	23,164	24,352	1,026	25,378	198,880	29,644	2,562
2010					14,162	871	15,033	164,380	2,016	25,181	19,992	773	20,765	185,598	28,263	2,254
2011					15,908	1,020	16,928	160,256	2,109	27,290	23,657	714	24,371	185,559	27,930	2,460
2012					17,970	1,215	19,185	161,642	2,350	29,640	23,766	793	24,559	187,698	26,420	2,270
2013 <sup>i</sup>					17,954	1,382	19,336	158,490	2,374	32,014	23,082	756	23,838	178,258	27,867	2,341
2014					17,272	1,206	18,478	152,696	2,399	34,413	24,348	798	25,146	179,331	29,122	2,316
2015					15,351	958	16,309	152,147	2,531	36,944	23,349	902	24,251	176,364	28,749	2,155
2016					13,383	701	14,084	155,186	2,726	39,670	27,598	964	28,562	184,846	28,455	2,435

YEAR <sup>a</sup>	HUNTING	COMBO	FUR/ FISH GAME	RESIDENT				NON-RESIDENT				HABITAT STAMP <sup>f</sup>	IA DUCK STAMP <sup>g</sup>	HUNT PRESERVE <sup>h</sup>	
				FUR over 16	FURHARVESTER		RESIDENT HUNT <sup>d</sup>	LIFETIME over 65 <sup>j</sup>		HUNTING					TOTAL LICENSE <sup>e</sup>
					over 16 <sup>b</sup>	under 16		TOTAL <sup>c</sup>	Sold	Total	over 18				
2017				13,464	636	14,100	147,596	2,976	42,646	27,370	940	28,310	176,836	27,345	2,401
2018				12,919	584	13,503	142,763	3,668	46,314	31,298	958	32,256	175,701	26,492	2,149
2019				13,813	594	14,407	138,983	3,292	49,606	22,181	714	22,895	161,426	26,252	2,129
2020				14,527	597	15,124	148,124	3,624	53,230	23,489	714	24,203	174,174	28,140	1,757
2021				14,593	556	15,149	142,820	3,637	56,867	26,239	575	26,814	172,211	28,160	1,985
2022				14,555	544	15,099	141,839	3,816	60,683	26,770	461	27,231	171,689	28,376	1,876
<b>Mean</b>															
10 Year				14,783	776	15,559	148,064	3,104		25,572	778	26,351	175,084	27,896	2,154
Long-term				16,261	1,569	17,830	245,128	2,484		29,984	1,162	23,648	229,290	39,612	2,081
<b>Change (%)</b>															
2021				0	-2	0	-1	5		2	-20	2	0	1	-5
10 Year				-2	-30	-3	-4	23		5	-41	3	-2	2	-13
Long-term				-10	-65	-15	-42	54		-11	-60	15	-25	-28	-10

<sup>a</sup>ELSI electronic licensing system in 1999\*. Resident hunting, combination, fur/fish/game licenses and furharvester were license types issued prior to ELSI implementation.

<sup>b</sup>Furharvester (over 16) sales is the sum of discontinued fur(over 16) and fur/fish/game licenses, from 1979-99. Lifetime Furharvester license type (34) added in 2019.

<sup>c</sup>Total furharvester sales does not include NR sales.

<sup>d</sup>Total resident licenses is sum of resident hunt, combination, and fur/fish/game, until ELSI system implementation in 1999. License types (2,9,29,30,37) beginning in 2013.

<sup>e</sup>For comparisons to previous years total NR licenses is sum of NR over and under 18 sales after 1999 ELSI implementation. NR Apprentices license (38) added in 2016, NR 5-day licenses (40,41) added in 2019.

<sup>f,g,h</sup>Numbers represent combined resident and non-resident sales. Habitat fee license types (9,20,24,28-32,37,38,41,93,94)

<sup>i</sup>New combination hunt/fish/fur/habitat licenses started in 2013. LT combined to maintain similar historical tallies.

<sup>j</sup>Includes Vet Lifetime license type (821) beginning in 2018

**Table 9 Estimated hunter numbers and days hunted (resident & NR combined) from the Iowa small-game survey.**

Year	Pheasant		Quail		Cottontail		Jackrabbit		Squirrel		Huns		Dove	
	Hunters	Days	Hunters	Days	Hunters	Days	Hunters	Days	Hunters	Days	Hunters	Days	Hunters	Days
1925*	75,000													
1958**	267,455													
1959**	238,903													
1963	277,400		47,028		169,994		30,494		150,932					
1964	271,285		46,535		179,585		31,815		136,415					
1965	225,735		46,450		138,379		26,080		123,640					
1966	240,400		63,785		154,647		20,355		130,500					
1967	244,300		62,485		150,050		20,615		138,520					
1968	247,100		70,367		147,380		20,131		120,790					
1969	259,100		81,100		159,000		24,810		133,600					
1970	283,400		87,665		167,190		26,460		136,150					
1971	301,150		80,250		134,470		16,326		118,059					
1972	230,000		63,900		137,000		12,800		105,000		6,400			
1973	307,974		106,150		201,560		23,209		159,473		22,374			
1974	307,200		101,101		192,100				159,000					
1975	280,019		102,668		175,850									
1976	289,592		125,575		173,125		11,600		143,474		22,054			
1977	279,689		103,776		170,074		11,302		141,596		17,691			
1978	270,413		101,916		142,809		14,268		120,503		34,329			
1979	241,972		73,461		114,642		10,029		111,434		23,465			
1980	252,440		86,816		119,901		8,526		111,425		27,554			
1981	254,803		97,430		150,881		11,106		117,942		28,731			
1982	214,263		68,479		118,994		4,862		105,262		21,532			
1983	203,014		63,060		118,535		7,331		98,553		25,366			
1984	176,312		58,630		102,993		5,543		86,380		21,179			
1985	175,225		54,427		107,500		6,568		88,849		25,956			
1986	184,759		63,985		92,727		5,193		84,082		30,822			
1987	212,118		83,754		103,199		7,298		77,819		40,878			
1988	204,659		74,584		84,529		4,376		74,783		44,154			
1989	211,586	1,416,241	79,971	433,130	89,054	419,336	5,634	38,364	80,937	391,257	48,785	289,071		
1990	210,845	1,315,902	72,886	320,223	87,437	431,627	4,679	9,044	70,539	305,551	49,220	239,066		
1991	202,319	1,261,018	62,684	326,789	83,200	385,398	4,001	6,018	63,601	299,538	25,165	168,761		

Year	Pheasant		Quail		Cottontail		Jackrabbit		Squirrel		Huns		Dove	
	Hunters	Days	Hunters	Days	Hunters	Days	Hunters	Days	Hunters	Days	Hunters	Days	Hunters	Days
1992	176,430	1,095,872	56,287	303,908	66,967	294,922	5,802	23,676	60,443	266,256	22,949	114,239		
1993	166,260	1,179,920	49,345	240,313	65,704	282,336	1,547	5,957	62,175	275,771	14,920	50,156		
1994	189,664	1,220,187	50,258	286,481	68,840	269,206	1,239	3,947	57,381	294,027	18,294	101,603		
1995	200,302	1,432,742	50,839	290,906	68,499	305,178	4,361	8,142	57,495	287,766	15,954	75,444		
1996	205,592	1,444,532	44,974	209,368	75,870	403,848	2,623	8,112	56,382	222,331	21,914	188,344		
1997	205,203	1,295,229	35,473	191,421	51,785	258,715	2,872	19,748	43,632	212,564	12,330	114,369		
1998	184,585	1,261,853	32,378	228,261	54,588	264,193	1,604	6,493	53,859	108,568	13,502	111,038		
1999a	181,673	985,847	41,117	178,160	50,254	208,218	2,456	11,837	46,994	174,920	11,390	57,884		
2000b	167,521	1,274,106	39,957	301,725	46,311	335,299	1,572	13,503	35,395	232,032	6,043	65,631		
2001	122,906	794,040	24,591	152,350	36,125	208,122	2,933	19,093	36,760	203,331	5,757	35,917		
2002	127,599	904,069	20,887	151,184	27,945	177,961	1,692	20,351	25,482	145,692	4,417	33,012		
2003	142,233	1,122,490	24,895	173,981	31,600	204,593	326	4,590	27,863	170,971	4,054	49,850		
2004	130,583	891,773	22,336	151,614	32,195	276,306	600	6,389	29,302	218,276	4,537	46,331		
2005	136,192	948,929	18,578	97,510	40,225	200,177	1,870	13,369	25,943	113,748	7,147	44,080		
2006	118,680	858,710	22,556	121,400	34,292	187,376	1,989	7,838	27,746	138,572	5,553	30,289		
2007	109,229	722,403	18,234	133,287	31,106	286,446	1,502	7,421	23,160	144,960	3,819	18,232		
2008	85,871	546,795	13,095	99,390	27,191	158,214	1,405	14,498	22,857	134,128	2,996	20,414		
2009	74,017	483,552	10,179	69,874	25,840	137,337	1,894	8,721	24,586	139,791	3,705	25,113		
2010	60,058	388,596	10,604	61,353	22,005	113,597	541	3,568	23,440	127,999	1,229	9,895		
2011	45,975	249,922	9,436	55,114	17,197	104,457	Closed		20,420	119,802	1,782	13,325	8,780	45,603
2012	47,180	286,375	8,769	43,343	18,247	81,105			21,698	124,814	1,481	11,321	9,328	29,018
2013	40,981	270,993	6,485	48,896	18,903	86,100			20,203	82,973	1,651	11,134	8,208	34,707
2014	49,925	283,220	6,546	34,670	20,904	97,618			19,704	96,473	1,631	8,071	11,396	43,950
2015	56,159	343,100	9,762	53,476	24,838	113,876			25,081	145,467	1,994	9,075	11,353	39,546
2016	57,218	321,538	10,005	52,876	23,475	111,104			21,874	96,972	2,686	14,237	13,409	51,713
2017c	54,915	344,725	7,519	36,376	23,299	107,313			18,301	124,149	2,013	5,421	9,568	35,089
2018	53,266	335,348	9,882	56,916	20,523	102,596			16,749	60,737	2,379	10,295	9,767	32,594
2019	51,891	328,444	8,131	48,334	15,173	69,686			16,018	92,464	1,561	5,734	9,000	34,607
2020	61,931	371,712	7,904	61,511	16,152	82,028			13,553	70,159	1,713	12,583	8,585	35,710
2021	62,732	402,291	8,676	54,080	16,919	90,500			17,500	57,572	861	1,655	10,942	43,331
2022 <sup>d</sup>	51,584	330,827	10,108	63,261	11,318	37,835			14,332	47,014	1,501	11,665	9,851	37,228
<b>Mean</b>														
10 Year	54,060	333,220	8,502	51,040	19,150	89,866			18,332	87,398	1,799	8,987	10,2080	38,848

Year	Pheasant		Quail		Cottontail		Jackrabbit		Squirrel		Huns		Dove	
	Hunters	Days	Hunters	Days	Hunters	Days	Hunters	Days	Hunters	Days	Hunters	Days	Hunters	Days
Long-term	177,158	785,685	48,679	150,926	84,185	202,724	9,005	11,849	70,434	168,431	14,641	58,919	10,016	38,591
<b>Change (%)</b>														
2021	-18	-18	17	17	-33	-58			-18	-18	74	605	-10	-14
10 Year	-5	-1	19	24	-41	-58			-22	-46	-17	30	-3	-4
Long-term	-71	-58	-79	-58	-87	-81			-80	-72	-90	-80	-2	-4

<sup>a</sup>Small Game Harvest Survey changed from a single to a double mailing. Hunter estimates from 1999-present are more conservative than pre-1999 estimates.

<sup>b</sup>Survey methods changed account for unrealistic harvest (reports of 1 bird harvested for 60 days effort). Hunters asked to report days they hunted rather than trips.

<sup>c</sup>Survey methodology changed for unrealistic harvest/days for quail, huns, rabbits, squirrel and doves

<sup>d</sup>Poor sample from small game survey makes pheasant, cottontail, and squirrel estimates highly suspect.

\*From Conservation Magazine 1955 Vol 14 Issue 10.

\*\*Nomsen RC. 1961. Results of the 1958 and 1959 Pheasant Hunter Survey. Ia Acad. Sci. 68:281-283.

**Table 10 Iowa's ring-necked pheasant hunting seasons.**

YEAR	DATES REGULAR / YOUTH	SEASON LENGTH	SHOOTING HOURS	LIMIT - BAG/POSS		COUNTIES OPEN
				REGULAR	YOUTH	
1925	OCT 22-22	3 days	½ hr before sunrise - 1200	3/?		13
1926	OCT 14-16	3 days	½ hr before sunrise - ½ hr after sunset	3/9		18
1927	OCT 14,15,21,22,29	5 days in 3 counties		3/?		17
		3 days in 14 counties	½ hr sunrise - sunset	3/?		
1928	No Season					
1929	30 OCT - 2 NOV	3 days	½ hr sunrise - sunset	3 any sex /?		24
1930	NOV 1,5,6,14,15	5 days	½ hr sunrise - sunset	3 any sex /?		31
1931	NOV 6-7	2 days	½ hr sunrise - sunset	3 any sex /?		23
1932	NOV 16,18,19	3 days	1200- sunset	3 (1 hen) /6 (2 hen)	21	
		6 days in all/parts 11 counties	1200-1700	3/6		30
1933	NOV 10,11,17,18,25,28	4 days in all/parts 25 counties (6 counties were in both zones)	1200-1700	3/6		
1934	NOV 24,27,28	3 days	1200-1700	3/6		27
1935	NOV 20-26	7 days	1200-1700	3 (1 hen) /6 (2 hen)	38	
1936	No Season					
1937	No Season					
1938	NOV 12-14	3 days	1200-1700	3/6		42

YEAR	DATES REGULAR / YOUTH	SEASON LENGTH	SHOOTING HOURS	LIMIT - BAG/POSS		COUNTIES OPEN
				REGULAR	YOUTH	
1939	NOV 12-14	3 days	1200-1700	3/6		42
1940	NOV 12-18	7 days	1200-1700	3/6		46
1941	NOV 12-18	7 days	1200-1700	3/6		53
1942	12 NOV - 2 DEC	21 days in 39 counties	1200-1700	3/6		59
	NOV 12-18	7 days in 20 counties	1200-1700	3/6		
1943	MAR 15-22	8 days	0900-1700	5 (2 hen) /10 (4 hen)	11 (Spring)	
	28 OCT - 3 DEC	37 days in 38 counties	0900-1700	6 (1 hen) /12 (2 hen)	65 (Fall)	
1944	28 OCT - 7 NOV	11 days in 27 counties	0900-1700	3/12		
	28 OCT - 8 DEC	42 days in 37 counties	0900-1700	6/18		64
1945	28 OCT - 6 NOV	10 days in 27 counties	0900-1700	3/18		
	28 OCT - 30 NOV	34 days in 36 counties	0900-1700	4/8		66
1946	28 OCT - 6 NOV	10 days in 30 counties	0900-1700	4/8		
1946	28 OCT-17 NOV	21	1000-1600	3/6		59
1947	11 NOV-20 NOV	10	1200-1600	2/2		64
1948	11 NOV-30 NOV	20	1200-1600	2/4		68
	11 NOV- 5 DEC	25	1200-1630	2/4		68
1949	11 NOV-17 NOV	7	1200-1630	2/4		79
1950	11 NOV- 5 DEC	25	1200-1630	3/3		70
	11 NOV-20 NOV	10	1200-1630	3/3		13
1951	11 NOV- 5 DEC	25	1200-1630	3/3		65
	11 NOV-22 NOV	12	1200-1630	3/3		27
1952	18 NOV-12 DEC	25	1200-1630	3/3		65
	18 NOV-29 NOV	12	1200-1630	3/3		27
1953	11 NOV- 5 DEC	25	1200-1630	3/3		69
	11 NOV-22 NOV	12	1200-1630	3/3		23
1954	11 NOV- 5 DEC	25	1200-1630	3/3		70
	11 NOV-22 NOV	12	1200-1630	3/3		22
1955	12 NOV- 5 DEC	24	1200-1630	3/3		70
	12 NOV-24 NOV	13	1200-1630	3/3		22
1956	10 NOV- 3 DEC	24	1200-1630	3/3		70
	10 NOV-22 NOV	13	1200-1630	3/3		22

YEAR	DATES REGULAR / YOUTH	SEASON LENGTH	SHOOTING HOURS	LIMIT - BAG/POSS		COUNTIES OPEN
				REGULAR	YOUTH	
1957	9 NOV- 2 DEC	24	1200-1630	3/3		70
	9 NOV-21 NOV	13	1200-1630	3/3		22
1958	8 NOV- 1 DEC	24	1000-1630	3/6		70
	8 NOV-23 NOV	16	1000-1630	3/6		22
1959	14 NOV- 7 DEC	24	0900-1630	3/6		70
	14 NOV-29 NOV	16	0900-1630	3/6		22
1960	5 NOV-28 NOV	24	0900-1630	3/6		92
1961	11 NOV-15 DEC	35	0900-1630	3/6		92
1962	10 NOV-14 DEC	35	0900-1630	3/6		92
1963-64	9 NOV- 1 JAN	54	0830-1700	3/9		92
1964-65	7 NOV- 3 JAN	58	0830-1700	3/9		92
1965-66	13 NOV- 2 JAN	51	0830-1600	2/6		92
1966-67	12 NOV- 2 JAN	52	0800-1630	3/6		92
1967-68	11 NOV- 1 JAN	52	0800-1630	3/6		94
1968-69	9 NOV-31 DEC	53	0800-1630	3/6		94
1969-70	8 NOV-31 DEC	54	0800-1630	3/6		94
1970-71	14 NOV- 3 JAN	51	0800-1630	3/6		94
1971-72	13 NOV- 2 JAN	51	0800-1630	3/6		96
1972-73	11 NOV- 1 JAN	52	0800-1630	3/12		96
1973-74	10 NOV- 6 JAN	58	0800-1630	3/12		96
1974-75	9 NOV- 5 JAN	58	SUNRISE-SUNSET	3/12		97
1975-76	8 NOV- 4 JAN	58	0800-1630	3/6		97
1976-77	6 NOV- 2 JAN	58	0800-1630	3/6		STATEWIDE
1977-78	5 NOV- 1 JAN	58	0800-1630	3/6		STATEWIDE
1978-79	4 NOV- 1 JAN	60	0800-1630	3/6		STATEWIDE
1979-80	3 NOV- 6 JAN	65	0800-1630	3/6		STATEWIDE
1980-81	1 NOV- 4 JAN	65	0800-1630	3/6		STATEWIDE
1981-82	7 NOV- 3 JAN	58	0800-1630	3/6		STATEWIDE
1982-83	6 NOV- 2 JAN	58	0800-1630	3/6		STATEWIDE
1983-84	5 NOV- 1 JAN	58	0800-1630	3/6		STATEWIDE
1984-85	3 NOV- 1 JAN	60	0800-1630	3/6		STATEWIDE

YEAR	DATES REGULAR / YOUTH	SEASON LENGTH	SHOOTING HOURS	LIMIT - BAG/POSS		COUNTIES OPEN
				REGULAR	YOUTH	
1985-86	2 NOV- 5 JAN	65	0800-1630	3/9		STATEWIDE
1986-87	1 NOV- 4 JAN	65	0800-1630	3/9		STATEWIDE
1987-88	31 OCT- 3 JAN	65	0800-1630	3/12		STATEWIDE
1988-89	29 OCT- 8 JAN	72	0800-1630	3/12		STATEWIDE
1989-90	28 OCT-10 JAN	75	0800-1630	3/12		STATEWIDE
1990-91	27 OCT-10 JAN	76	0800-1630	3/12		STATEWIDE
1991-92	26 OCT-10 JAN	77	0800-1630	3/12		STATEWIDE
1992-93	31 OCT-10 JAN	72	0800-1630	3/12		STATEWIDE
1993-94	30 OCT-10 JAN	72	0800-1630	3/12		STATEWIDE
1994-95	29 OCT-10 JAN	74	0800-1630	3/12		STATEWIDE
1995-96	28 OCT-10 JAN	75	0800-1630	3/12		STATEWIDE
1996-97	26 OCT-10 JAN	77	0800-1630	3/12		STATEWIDE
1997-98	26 OCT-10 JAN / 18-19 OCT	77/2	0800-1630	3/12	1/2	STATEWIDE
1998-99	31 OCT-10 JAN / 23-24 OCT	72/2	0800-1630	3/12	1/2	STATEWIDE
1999-00	30 OCT-10 JAN / 22-23 OCT	73/2	0800-1630	3/12	1/2	STATEWIDE
2000-01	28 OCT-10 JAN / 21-22 OCT	75/2	0800-1630	3/12	1/2	STATEWIDE
2001-02	27 OCT-10 JAN / 20-21 OCT	76/2	0800-1630	3/12	1/2	STATEWIDE
2002-03	26 OCT-10 JAN / 19-20 OCT	77/2	0800-1630	3/12	1/2	STATEWIDE
2003-04	25 OCT-10 JAN / 18-19 OCT	78/2	0800-1630	3/12	1/2	STATEWIDE
2004-05	30 OCT-10 JAN / 23-24 OCT	73/2	0800-1630	3/12	1/2	STATEWIDE
2005-06	29 OCT-10 JAN / 22-23 OCT	74/2	0800-1630	3/12	1/2	STATEWIDE
2006-07	28 OCT-10 JAN / 21-22 OCT	75/2	0800-1630	3/12	1/2	STATEWIDE
2007-08	27 OCT-10 JAN / 21-22 OCT	76/2	0800-1630	3/12	1/2	STATEWIDE
2008-09	25 OCT-10 JAN / 18-19 OCT	78/2	0800-1630	3/12	1/2	STATEWIDE
2009-10	31 OCT-10 JAN / 24-25 OCT	72/2	0800-1630	3/12	1/2	STATEWIDE
2010-11	30 OCT-10 JAN / 23-24 OCT	73/2	0800-1630	3/12	1/2	STATEWIDE
2011-12	29 OCT-10 JAN / 22-23 OCT	74/2	0800-1630	3/12	1/2	STATEWIDE
2012-13	27 OCT-10 JAN / 20-21 OCT	76/2	0800-1630	3/12	1/2	STATEWIDE
2013-14	26 OCT-10 JAN / 19-20 OCT	77/2	0800-1630	3/12	1/2	STATEWIDE
2014-15	25 OCT-10 JAN / 18-19 OCT	78/2	0800-1630	3/12	1/2	STATEWIDE
2015-16	31 OCT-10 JAN / 24-25 OCT	72/2	0800-1630	3/12	1/2	STATEWIDE



YEAR	DATES REGULAR / YOUTH	SEASON LENGTH	SHOOTING HOURS	LIMIT - BAG/POSS		COUNTIES OPEN
				REGULAR	YOUTH	
2016-17	29 OCT-10 JAN / 22-23 OCT	74/2	0800-1630	3/12	1/2	STATEWIDE
2017-18	28 OCT-10 JAN / 21-22 OCT	75/2	0800-1630	3/12	1/2	STATEWIDE
2018-19	27 OCT-10 JAN / 20-21 OCT	76/2	0800-1630	3/12	1/2	STATEWIDE
2019-20	26 OCT-10 JAN / 19-20 OCT	77/2	0800-1630	3/12	1/2	STATEWIDE
2020-21	31 OCT-10 JAN / 24-25 OCT	72/2	0800-1630	3/12	1/2	STATEWIDE
2021-22	30 OCT-10 JAN / 23-24 OCT	73/2	0800-1630	3/12	1/2	STATEWIDE
2022-23	29 OCT-10 JAN / 22-23 OCT	74/2	0800-1630	3/12	1/2	STATEWIDE

<sup>1</sup> Iowa's first youth pheasant season was 1997, open to resident hunters 15 years or younger.

**Table 11 Iowa's Bobwhite quail hunting seasons.**

<b>YEAR</b>	<b>DATES</b>	<b>SEASON LENGTH</b>	<b>SHOOTING HOURS</b>	<b>LIMIT BAG/POSS</b>	<b>AREA OPEN</b>
1963-64	2 NOV- 1 JAN	61	0830-1700	6/12	STATEWIDE
1964-65	31 OCT- 3 JAN	65	0830-1700	8/16	STATEWIDE
1965-66	6 NOV-31 JAN	86	0830-1600	8/16	STATEWIDE
1966-67	22 OCT-31 JAN	102	0800-1630	8/16	STATEWIDE
1967-68	21 OCT-28 JAN	103	0800-1630	8/16	STATEWIDE
1968-69	26 OCT-31 JAN	98	0800-1630	8/16	STATEWIDE
1969-70	25 OCT-31 JAN	99	0800-1630	8/16	STATEWIDE
1970-71	24 OCT-31 JAN	100	0800-1630	8/16	STATEWIDE
1971-72	23 OCT-31 JAN	101	0800-1630	8/16	STATEWIDE
1972-73	28 OCT-31 JAN	96	0800-1630	8/16	STATEWIDE
1973-74	27 OCT-31 JAN	97	0800-1630	8/16	STATEWIDE
1974-75	26 OCT-31 JAN	98	SUNRISE-SUNSET	8/16	STATEWIDE
1975-76	25 OCT-31 JAN	99	0800-1630	8/16	STATEWIDE
1976-77	6 NOV-31 JAN	86	0800-1630	8/16	STATEWIDE
1977-78	5 NOV-31 JAN	87	0800-1630	8/16	STATEWIDE
1978-79	4 NOV-31 JAN	88	0800-1630	8/16	STATEWIDE
1979-80	3 NOV- 6 JAN	64	0800-1630	6/12	STATEWIDE
1980-81	1 NOV-31 JAN	92	0800-1630	8/16	STATEWIDE
1981-82	7 NOV-31 JAN	86	0800-1630	8/16	STATEWIDE
1982-83	6 NOV-31 JAN	87	0800-1630	8/16	STATEWIDE
1983-84	5 NOV-31 JAN	88	0800-1630	8/16	STATEWIDE
1984-85	3 NOV-31 JAN	90	0800-1630	8/16	STATEWIDE
1985-86	2 NOV-31 JAN	91	0800-1630	8/16	STATEWIDE
1986-87	1 NOV-31 JAN	92	0800-1630	8/16	STATEWIDE
1987-88	31 OCT-31 JAN	93	0800-1630	8/16	STATEWIDE
1988-89	29 OCT-31 JAN	95	0800-1630	8/16	STATEWIDE
1989-90	28 OCT-31 JAN	96	0800-1630	8/16	STATEWIDE
1990-91	27 OCT-31 JAN	97	0800-1630	8/16	STATEWIDE
1991-92	26 OCT-31 JAN	98	0800-1630	8/16	STATEWIDE
1992-93	31 OCT-31 JAN	93	0800-1630	8/16	STATEWIDE
1993-94	30 OCT-31 JAN	93	0800-1630	8/16	STATEWIDE
1994-95	29 OCT-31 JAN	95	0800-1630	8/16	STATEWIDE
1995-96	28 OCT-31 JAN	96	0800-1630	8/16	STATEWIDE
1996-97	26 OCT-31 JAN	98	0800-1630	8/16	STATEWIDE
1997-98	25 OCT-31 JAN	99	0800-1630	8/16	STATEWIDE
1998-99	31 OCT-31 JAN	93	0800-1630	8/16	STATEWIDE
1999-00	30 OCT-31 JAN	94	0800-1630	8/16	STATEWIDE
2000-01	28 OCT-31 JAN	96	0800-1630	8/16	STATEWIDE
2001-02	27 OCT-31 JAN	97	0800-1630	8/16	STATEWIDE
2002-03	26 OCT-31 JAN	98	0800-1630	8/16	STATEWIDE
2003-04	25 OCT-31 JAN	99	0800-1630	8/16	STATEWIDE
2004-05	30 OCT-31 JAN	94	0800-1630	8/16	STATEWIDE
2005-06	29 OCT-31 JAN	95	0800-1630	8/16	STATEWIDE

YEAR	DATES	SEASON LENGTH	SHOOTING HOURS	LIMIT BAG/POSS	AREA OPEN
2006-07	28 OCT-31 JAN	96	0800-1630	8/16	STATEWIDE
2007-08	27 OCT-31 JAN	97	0800-1630	8/16	STATEWIDE
2008-09	25 OCT-31 JAN	99	0800-1630	8/16	STATEWIDE
2009-10	31 OCT-31 JAN	93	0800-1630	8/16	STATEWIDE
2010-11	30 OCT-31 JAN	94	0800-1630	8/16	STATEWIDE
2011-12	29 OCT-31 JAN	95	0800-1630	8/16	STATEWIDE
2012-13	27 OCT-31 JAN	97	0800-1630	8/16	STATEWIDE
2013-14	26 OCT-31 JAN	98	0800-1630	8/16	STATEWIDE
2014-15	25 OCT-31 JAN	99	0800-1630	8/16	STATEWIDE
2015-16	31 OCT-31 JAN	93	0800-1630	8/16	STATEWIDE
2016-17	29 OCT-31 JAN	95	0800-1630	8/16	STATEWIDE
2017-18	28 OCT-31 JAN	96	0800-1630	8/16	STATEWIDE
2018-19	27 OCT-31 JAN	97	0800-1630	8/16	STATEWIDE
2019-20	26 OCT-31 JAN	98	0800-1630	8/16	STATEWIDE
2020-21	31 OCT-31 JAN	93	0800-1630	8/16	STATEWIDE
2021-22	30 OCT-31 JAN	94	0800-1630	8/16	STATEWIDE
2022-23	29 OCT-31 JAN	95	0800-1630	8/16	STATEWIDE

**Table 12 Iowa's Hungarian partridge hunting seasons**

YEAR	DATES	SEASON LENGTH	SHOOTING HOURS	LIMIT BAG/POSS	AREA OPEN
1963-64	9 NOV- 1 JAN	54	0830-1700	2/4	16 NW COUNTIES
1964-65	7 NOV- 3 JAN	58	0830-1700	2/4	W US 65, N US 20
1965-66	13 NOV- 2 JAN	51	0830-1600	2/4	W US 65, N US 20
1966-67	12 NOV- 2 JAN	52	0800-1630	2/4	W US 65, N US 20
1967-68	11 NOV- 1 JAN	52	0800-1630	2/4	W US 65, N US 20
1968-69	9 NOV-31 DEC	53	0800-1630	2/4	?
1969-70	8 NOV-31 DEC	54	0800-1630	2/4	?
1970-71	14 NOV- 3 JAN	51	0800-1630	2/4	W. US 65; N. US 30, I29, STATE 141
1971-72	13 NOV- 2 JAN	51	0800-1630	2/4	W. US 65; N. US 30, I29, STATE 141
1972-73	11 NOV- 1 JAN	52	0800-1630	4/8	W. US 65; N. US 30, I29, STATE 141
1973-74	10 NOV- 6 JAN	58	0800-1630	4/8	N. US 30
1974-75	9 NOV- 5 JAN	58	SUNRISE-SUNSET	4/8	N. US 30
1975-76	8 NOV- 4 JAN	58	0800-1630	4/8	N. US 30
1976-77	6 NOV- 2 JAN	58	0800-1630	4/8	N. US 30
1977-78	5 NOV- 1 JAN	58	0800-1630	6/12	N. US 30
1978-79	4 NOV- 1 JAN	60	0800-1630	6/12	N. US 30
1979-80	3 NOV- 6 JAN	65	0800-1630	6/12	N. US 30
1980-81	1 NOV-31 JAN	92	0800-1630	6/12	N. I-80
1981-82	7 NOV-31 JAN	86	0800-1630	6/12	N. I-80
1982-83	6 NOV-31 JAN	87	0800-1630	6/12	N. I-80
1983-84	5 NOV-31 JAN	88	0800-1630	6/12	N. I-80

<b>YEAR</b>	<b>DATES</b>	<b>SEASON LENGTH</b>	<b>SHOOTING HOURS</b>	<b>LIMIT BAG/POSS</b>	<b>AREA OPEN</b>
1984-85	3 NOV-31 JAN	90	0800-1630	6/12	N. I-80
1985-86	2 NOV-31 JAN	91	0800-1630	6/12	N. I-80
1986-87	1 NOV-31 JAN	92	0800-1630	6/12	STATEWIDE
1987-88	31 OCT-31 JAN	93	0800-1630	8/16	STATEWIDE
1988-89	29 OCT-31 JAN	94	0800-1630	8/16	STATEWIDE
1989-90	7 OCT-31 JAN	117	0800-1630	8/16	STATEWIDE
1990-91	6 OCT-31 JAN	118	0800-1630	8/16	STATEWIDE
1991-92	5 OCT-31 JAN	119	0800-1630	8/16	STATEWIDE
1992-93	10 OCT-31 JAN	114	0800-1630	8/16	STATEWIDE
1993-94	9 OCT-31 JAN	115	0800-1630	8/16	STATEWIDE
1994-95	8 OCT-31 JAN	116	0800-1630	8/16	STATEWIDE
1995-96	14 OCT-31 JAN	109	0800-1630	8/16	STATEWIDE
1996-97	12 OCT-31 JAN	112	0800-1630	8/16	STATEWIDE
1997-98	11 OCT-31 JAN	113	0800-1630	8/16	STATEWIDE
1998-99	10 OCT-31 JAN	114	0800-1630	8/16	STATEWIDE
1999-00	9 OCT-31 JAN	115	0800-1630	8/16	STATEWIDE
2000-01	14 OCT-31 JAN	110	0800-1630	8/16	STATEWIDE
2001-02	13 OCT-31 JAN	111	0800-1630	8/16	STATEWIDE
2002-03	12 OCT-31 JAN	112	0800-1630	8/16	STATEWIDE
2003-04	11 OCT-31 JAN	113	0800-1630	8/16	STATEWIDE
2004-05	9 OCT-31 JAN	115	0800-1630	8/16	STATEWIDE
2005-06	8 OCT-31 JAN	116	0800-1630	8/16	STATEWIDE
2006-07	7 OCT-31 JAN	117	0800-1630	8/16	STATEWIDE
2007-08	13 OCT-31 JAN	111	0800-1630	8/16	STATEWIDE
2008-09	11 OCT-31 JAN	113	0800-1630	8/16	STATEWIDE
2009-10	10 OCT-31 JAN	114	0800-1630	8/16	STATEWIDE
2010-11	9 OCT-31 JAN	115	0800-1630	8/16	STATEWIDE
2011-12	8 OCT-31 JAN	116	0800-1630	8/16	STATEWIDE
2012-13	13 OCT-31 JAN	111	0800-1630	8/16	STATEWIDE
2013-14	12 OCT-31 JAN	112	0800-1630	8/16	STATEWIDE
2014-15	11 OCT-31 JAN	113	0800-1630	8/16	STATEWIDE
2015-16	10 OCT-31 JAN	114	0800-1630	8/16	STATEWIDE
2016-17	8 OCT-31 JAN	116	0800-1630	8/16	STATEWIDE
2017-18	14 OCT-31 JAN	110	0800-1630	8/16	STATEWIDE
2018-19	13 OCT-31 JAN	111	0800-1630	8/16	STATEWIDE
2019-20	12 OCT-31 JAN	112	0800-1630	8/16	STATEWIDE
2020-21	10 OCT-31 JAN	114	0800-1630	8/16	STATEWIDE
2021-22	9 OCT-31 JAN	115	0800-1630	8/16	STATEWIDE
2022-23	8 OCT-31 JAN	116	0800-1630	8/16	STATEWIDE

**Table 13 Iowa's cottontail and jackrabbit hunting seasons.**

YEAR	DATES COTTONTAILS / JACKRABBITS	SEASON LENGTH	SHOOTING HOURS	LIMIT - BAG/POSS		AREA OPEN
				COTTONTAILS	JACKRABBITS	
1963-64	14 SEP-23 FEB	163	0600-1800	Aggregate-10/None		STATEWIDE
1964-65	12 SEP-21 FEB	163	0600-1800	Aggregate-10/None		STATEWIDE
1965-66	12 SEP-21 FEB	163	0600-1800	Aggregate-10/None		STATEWIDE
1966-67	10 SEP-19 FEB	163	0600-1800	Aggregate-10/None		STATEWIDE
1967-68	15 SEP-17 FEB	163	0600-1800	Aggregate-10/None		STATEWIDE
1968-69	14 SEP-16 FEB	163	0600-1800	Aggregate-10/None		STATEWIDE
1969-70	13 SEP-15 FEB	163	0600-1800	Aggregate-10/None		STATEWIDE
1970-71	12 SEP-28 FEB	170	0600-1800	Aggregate-10/None		STATEWIDE
1971-72	11 SEP-29 FEB	171	0600-1800	Aggregate-10/None		STATEWIDE
1972-73	9 SEP-28 FEB	173	0600-1800	Aggregate-10/None		STATEWIDE
1973-74	8 SEP-28 FEB	174	0600-1800	Aggregate-10/None		STATEWIDE
1974-75	7 SEP-28 FEB	175	Sunrise-Sunset	Aggregate-10/None		STATEWIDE
1975-76	6 SEP-28 FEB	176	Sunrise-Sunset	Aggregate-10/None		STATEWIDE
1976-77	11 SEP-28 FEB	171	Sunrise-Sunset	Aggregate-10/None		STATEWIDE
1977-78	3 SEP-28 FEB	179	Sunrise-Sunset	Aggregate-10/None		STATEWIDE
1978-79	2 SEP-28 FEB/4 NOV-7 JAN	180/65	Sunrise-Sunset	10/None	3/6	STATEWIDE
1979-80	1 SEP-29 FEB/3 NOV-6 JAN	182/65	Sunrise-Sunset	10/20	3/6	STATEWIDE
1980-81	6 SEP-28 FEB/1 NOV-4 JAN	176/65	Sunrise-Sunset	10/20	3/6	STATEWIDE
1981-82	5 SEP-28 FEB/7 NOV-3 JAN	177/58	Sunrise-Sunset	10/20	3/6	STATEWIDE
1982-83	4 SEP-28 FEB/6 NOV-2 JAN	178/58	Sunrise-Sunset	10/20	3/6	STATEWIDE
1983-84	3 SEP-29 FEB/5 NOV-18 DEC	180/44	Sunrise-Sunset	10/20	3/6	STATEWIDE
1984-85	1 SEP-28 FEB/3 NOV-16 DEC	181/44	Sunrise-Sunset	10/20	3/6	STATEWIDE
1985-86	31 AUG-28 FEB/2 NOV-15 DEC	182/44	Sunrise-Sunset	10/20	3/6	STATEWIDE
1986-87	30 AUG-28 FEB/1 NOV-14 DEC	183/44	Sunrise-Sunset	10/20	3/6	STATEWIDE
1987-88	5 SEP-29 FEB/31 OCT-13 DEC	178/44	Sunrise-Sunset	10/20	3/6	STATEWIDE
1988-89	3 SEP-28 FEB/28 OCT-10 DEC	179/44	Sunrise-Sunset	10/20	3/6	STATEWIDE
1989-90	2 SEP-28 FEB/29 OCT-11 DEC	180/44	Sunrise-Sunset	10/20	3/6	STATEWIDE
1990-91	1 SEP-28 FEB/27 OCT-9 DEC	181/44	Sunrise-Sunset	10/20	3/6	STATEWIDE
1991-92	31 AUG-29 FEB/26 OCT-8 DEC	183/44	Sunrise-Sunset	10/20	3/6	STATEWIDE
1992-93	5 SEP-28 FEB/31 OCT-6 DEC	177/37	Sunrise-Sunset	10/20	3/6	STATEWIDE
1993-94	4 SEP-28 FEB/30 OCT-5 DEC	176/37	Sunrise-Sunset	10/20	2/4	STATEWIDE
1994-95	3 SEP-28 FEB/29 OCT-4 DEC	177/37	Sunrise-Sunset	10/20	2/4	STATEWIDE
1995-96	2 SEP-28 FEB/28 OCT-1 DEC	178/35	Sunrise-Sunset	10/20	2/4	STATEWIDE
1996-97	7 SEP-28 FEB/26 OCT-1 DEC	174/37	Sunrise-Sunset	10/20	2/4	STATEWIDE
1997-98	1 SEP-28 FEB/25 OCT-1 DEC	181/38	Sunrise-Sunset	10/20	2/4	STATEWIDE
1998-99	1 SEP-28 FEB/31 OCT-1 DEC	181/32	Sunrise-Sunset	10/20	2/4	STATEWIDE
1999-00	1 SEP-28 FEB/30 OCT-1 DEC	181/33	Sunrise-Sunset	10/20	2/4	STATEWIDE
2000-01	1 SEP-28 FEB/28 OCT-1 DEC	181/35	Sunrise-Sunset	10/20	2/4	STATEWIDE
2001-02	1 SEP-28 FEB/27 OCT-1 DEC	181/36	Sunrise-Sunset	10/20	2/4	STATEWIDE
2002-03	1 SEP-28 FEB/26 OCT-1 DEC	181/37	Sunrise-Sunset	10/20	2/4	STATEWIDE
2003-04	1 SEP-28 FEB/25 OCT-1 DEC	181/38	Sunrise-Sunset	10/20	2/4	STATEWIDE
2004-05	1 SEP-28 FEB/30 OCT-1 DEC	181/33	Sunrise-Sunset	10/20	2/4	STATEWIDE

YEAR	DATES COTTONTAILS / JACKRABBITS	SEASON LENGTH	SHOOTING HOURS	LIMIT - BAG/POSS		AREA OPEN
				COTTONTAILS	JACKRABBITS	
2005-06	1 SEP-28 FEB/29 OCT-1 DEC	181/34	Sunrise-Sunset	10/20	2/4	STATEWIDE
2006-07	1 SEP-28 FEB/28 OCT-1 DEC	181/35	Sunrise-Sunset	10/20	1/2	STATEWIDE
2007-08	1 SEP-28 FEB/27 OCT-1 DEC <sup>a</sup>	181/36	Sunrise-Sunset	10/20	1/2	STATEWIDE
2008-09	30 AUG-28 FEB/25 OCT-1 DEC	182/38	Sunrise-Sunset	10/20	1/2	STATEWIDE
2009-10	5 SEP-28 FEB/31 OCT-1 DEC	177/32	Sunrise-Sunset	10/20	1/2	STATEWIDE
2010-11	4 SEP-28 FEB/30 OCT-1 DEC	178/33	Sunrise-Sunset	10/20	1/2	STATEWIDE
2011-12	3 SEP-28 FEB/Closed	179/Closed	Sunrise-Sunset	10/20	Closed	STATEWIDE
2012-13	1 SEP-28 FEB/Closed	181/Closed	Sunrise-Sunset	10/20	Closed	STATEWIDE
2013-14	31 AUG-28 FEB/Closed	182/Closed	Sunrise-Sunset	10/20	Closed	STATEWIDE
2014-15	30 AUG-28 FEB/Closed	183/Closed	Sunrise-Sunset	10/20	Closed	STATEWIDE
2015-16	5 SEP-28 FEB/Closed	177/Closed	Sunrise-Sunset	10/20	Closed	STATEWIDE
2016-17	3 SEP-28 FEB/Closed	179/Closed	Sunrise-Sunset	10/20	Closed	STATEWIDE
2017-18	2 SEP-28 FEB/Closed	180/Closed	Sunrise-Sunset	10/20	Closed	STATEWIDE
2018-19	1 SEP-28 FEB/Closed	181/Closed	Sunrise-Sunset	10/20	Closed	STATEWIDE
2019-20	31 AUG-28 FEB/Closed	182/Closed	Sunrise-Sunset	10/20	Closed	STATEWIDE
2020-21	5 SEP-28 FEB/Closed	177/Closed	Sunrise-Sunset	10/20	Closed	STATEWIDE
2021-22	4 SEP-28 FEB/Closed	178/Closed	Sunrise-Sunset	10/20	Closed	STATEWIDE
2022-23	3 SEP-28 FEB/Closed	179/Closed	Sunrise-Sunset	10/20	Closed	STATEWIDE

1963-1977 SEASONS AND LIMITS ARE AN AGGREGATE OF COTTONTAILS AND JACKRABBITS.

<sup>a</sup>Cottontail opener changed from 1 Sept. to Saturday before Labor Day.

**Table 14 Iowa's dove hunting seasons<sup>a</sup>.**

YEAR	DATES	SEASON LENGTH	SHOOTING HOURS	LIMIT - BAG/POSS	AREA OPEN
	Closed				
2011-12	1 SEP-9 Nov	70	1/2 hr before SUNRISE-SUNSET	15/30	STATEWIDE
2012-13	1 SEP-9 Nov	70			
2013-14	1 SEP-9 Nov	70			
2014-15	1 SEP-9 Nov	70			
2015-16	1 SEP-9 Nov	70			
2016-17	1 SEP-9 Nov	70			
2017-18	1 SEP-29 Nov	90			
2018-19	1 SEP-29 Nov				
2019-20	1 SEP-29 Nov				
2020-21	1 SEP-29 Nov				
2021-22	1 SEP-29 Nov				
2022-23	1 SEP-29 Nov				

<sup>a</sup>Governor signed SF464 giving the DNR authority to establish the state's first mourning dove season in 2011. Dove species include mourning, eurasian collared, and white winged.

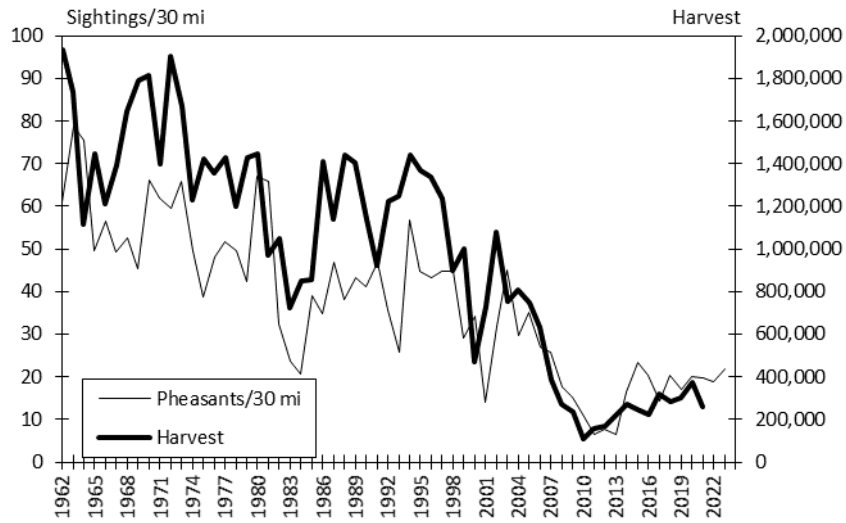


Figure 1 Statewide trends in pheasant harvest and August roadside survey counts

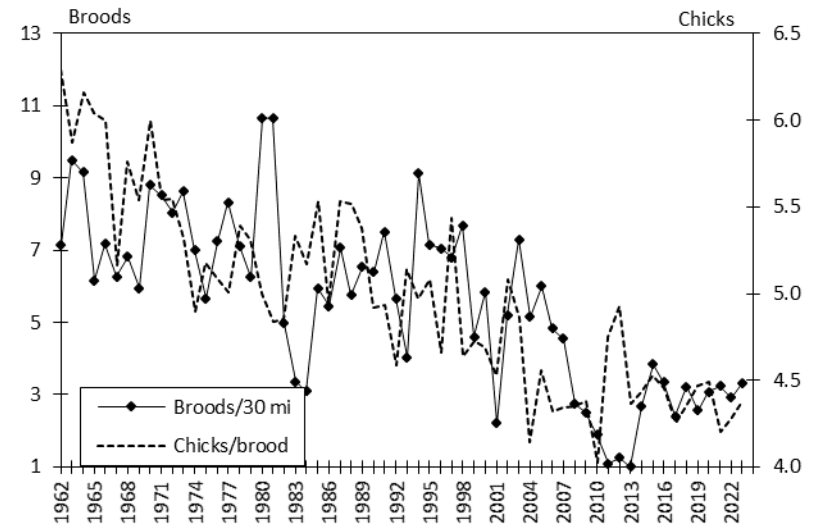


Figure 2 Statewide trends in pheasant broods and average brood size from August roadside survey

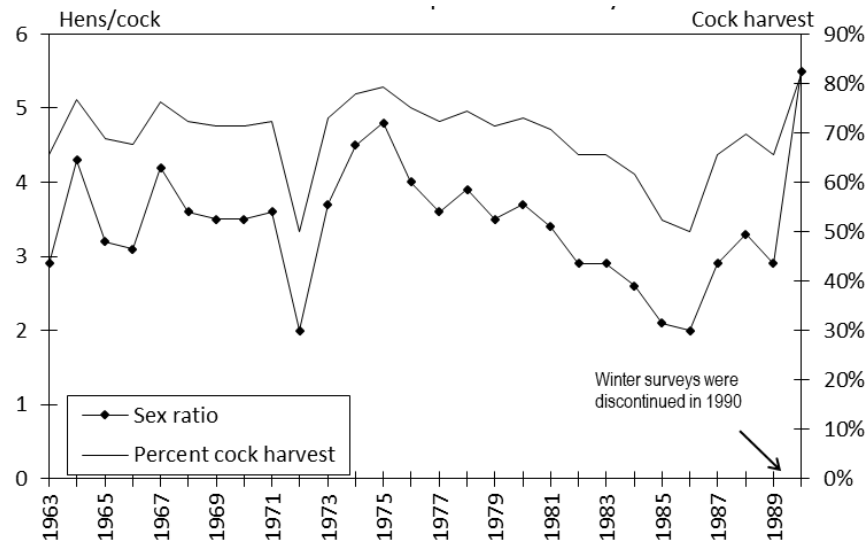


Figure 3 Statewide sex ratio and estimated cock harvest from winter pheasant surveys

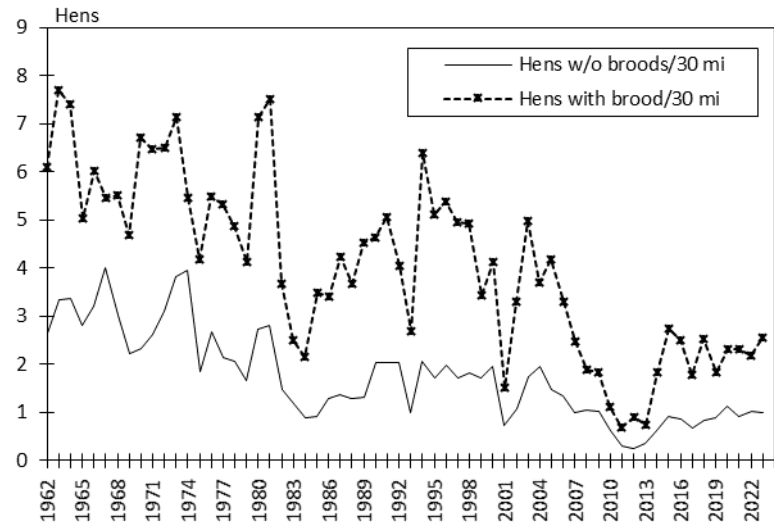


Figure 4 Statewide trends in pheasant hens with and without broods from August roadside survey

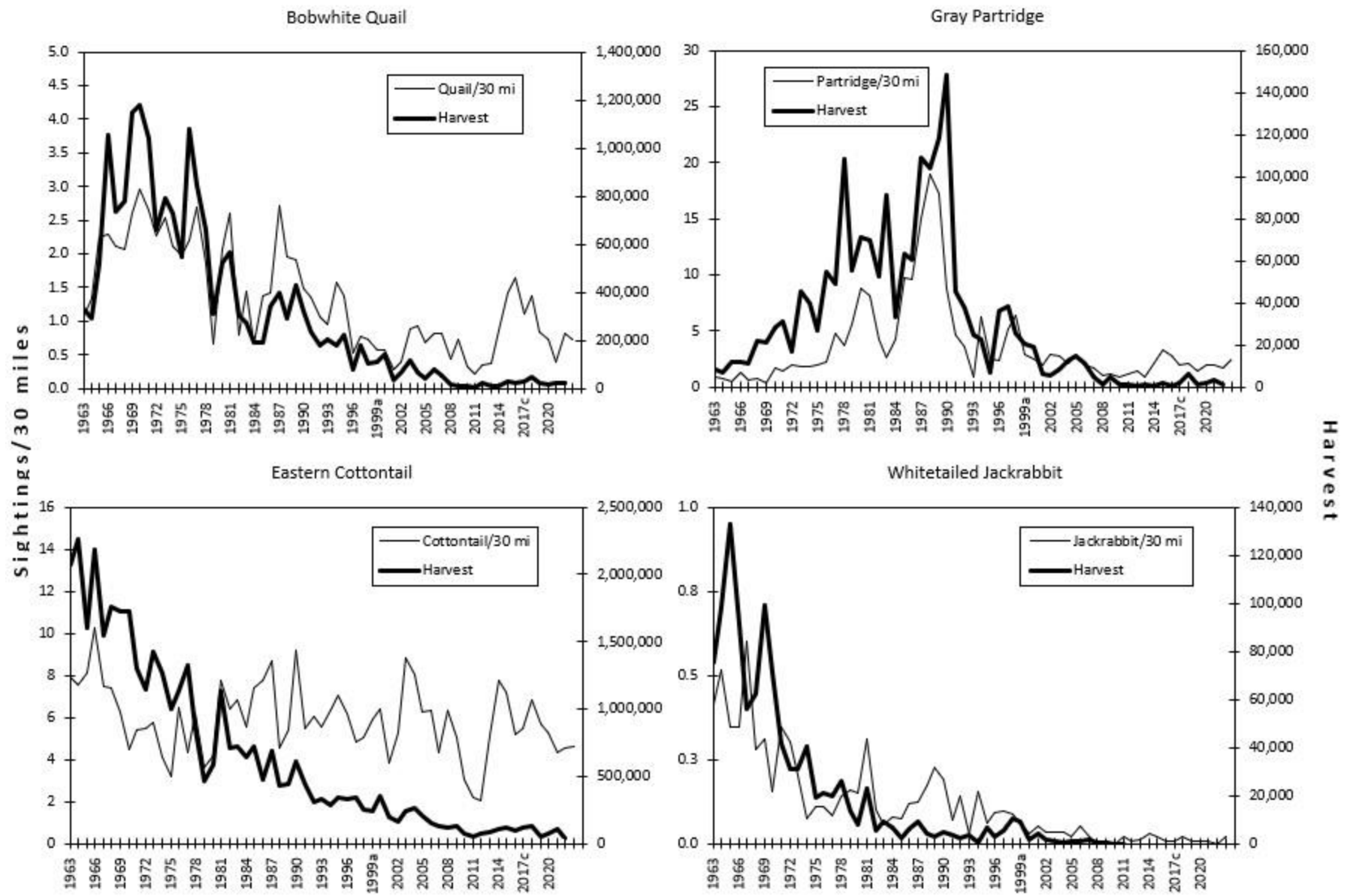
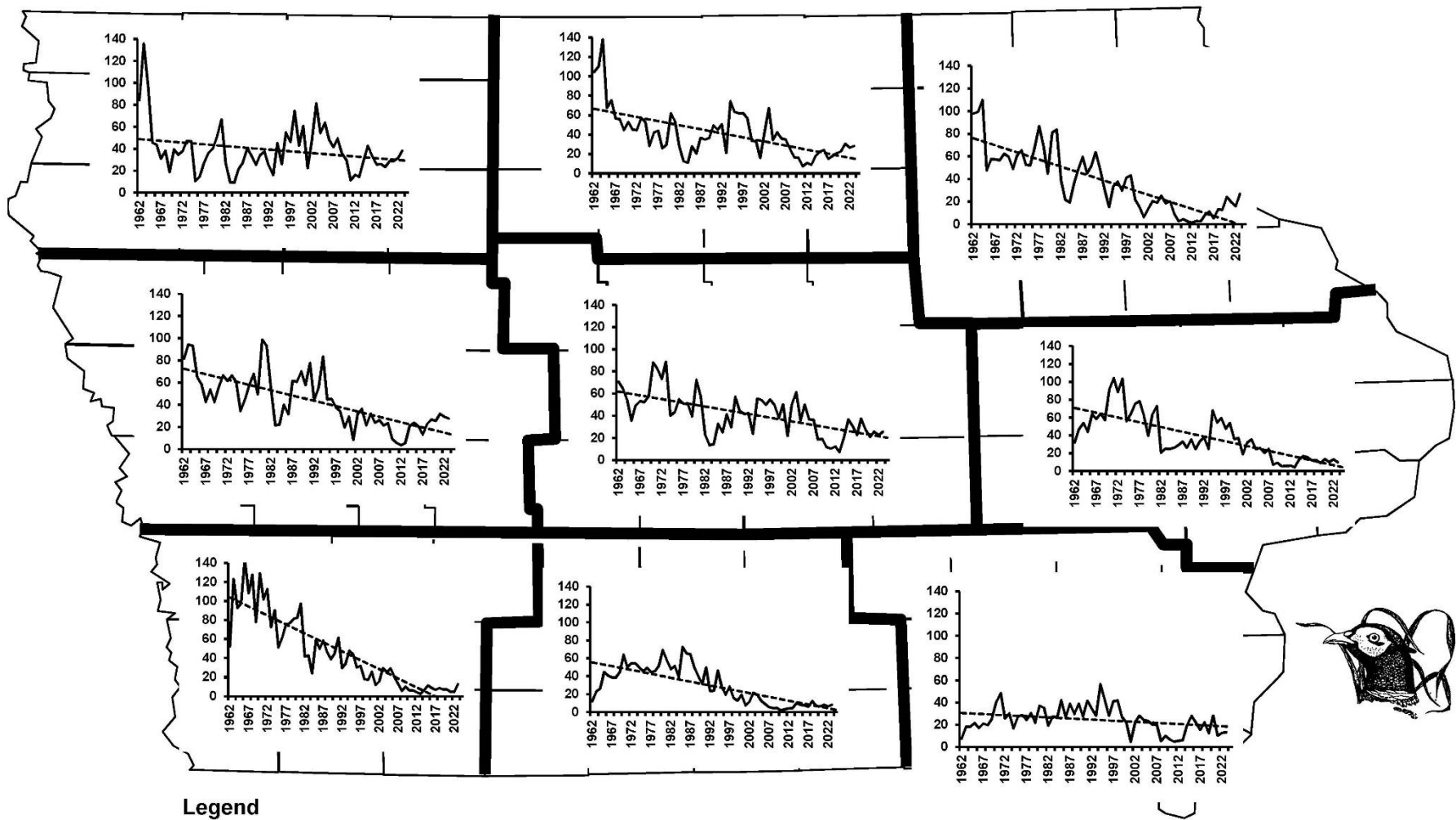


Figure 5 Statewide trends in small game harvests and August roadside survey counts





**Figure 6 Regional trends in ring-necked pheasant numbers from the August roadside survey (1962-present).**  
 Note: Because of variation in historical counts, vertical axis' among survey regions are not to the same scale.

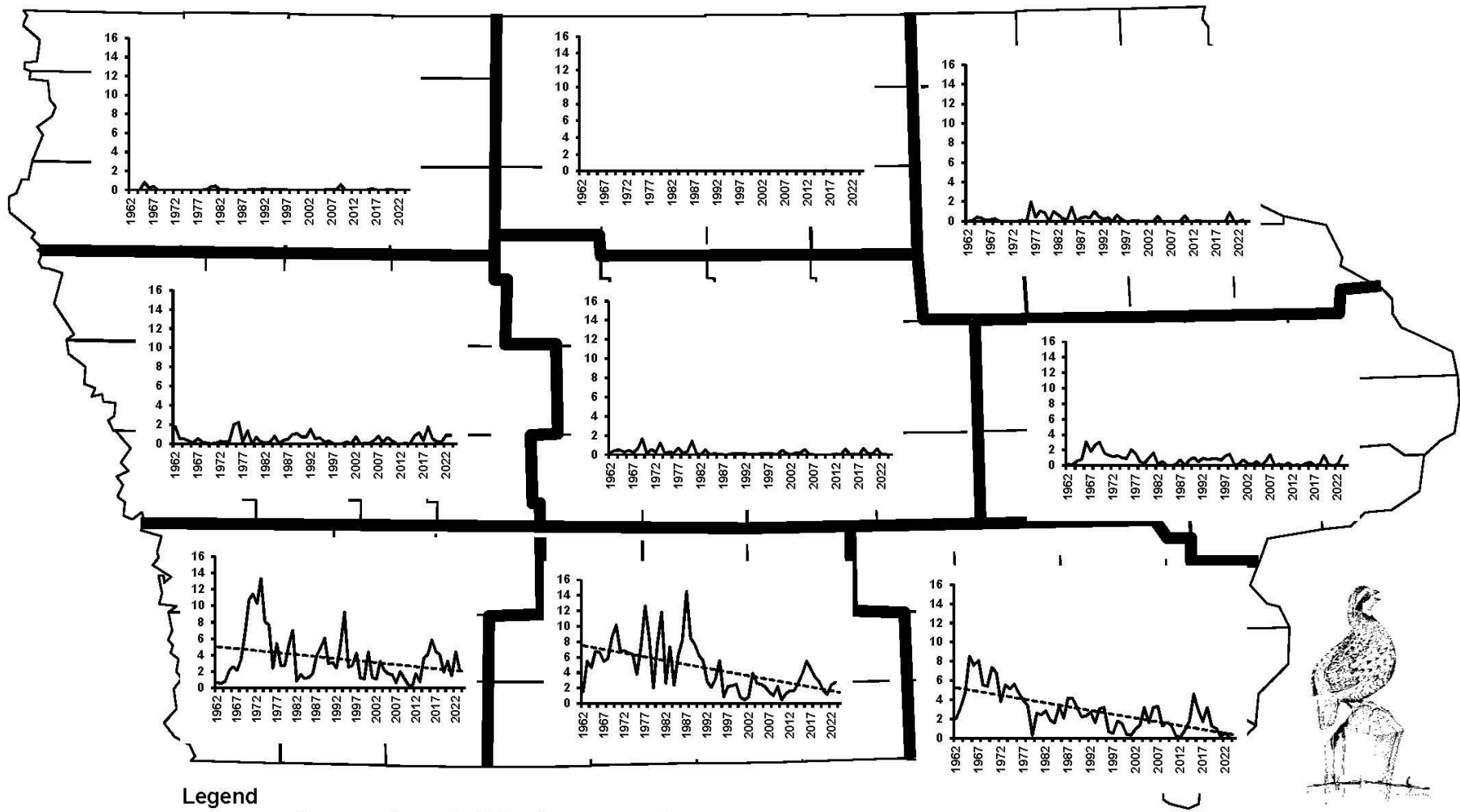


Figure 7 Regional trends in bobwhite quail numbers from the August roadside survey (1962-present).

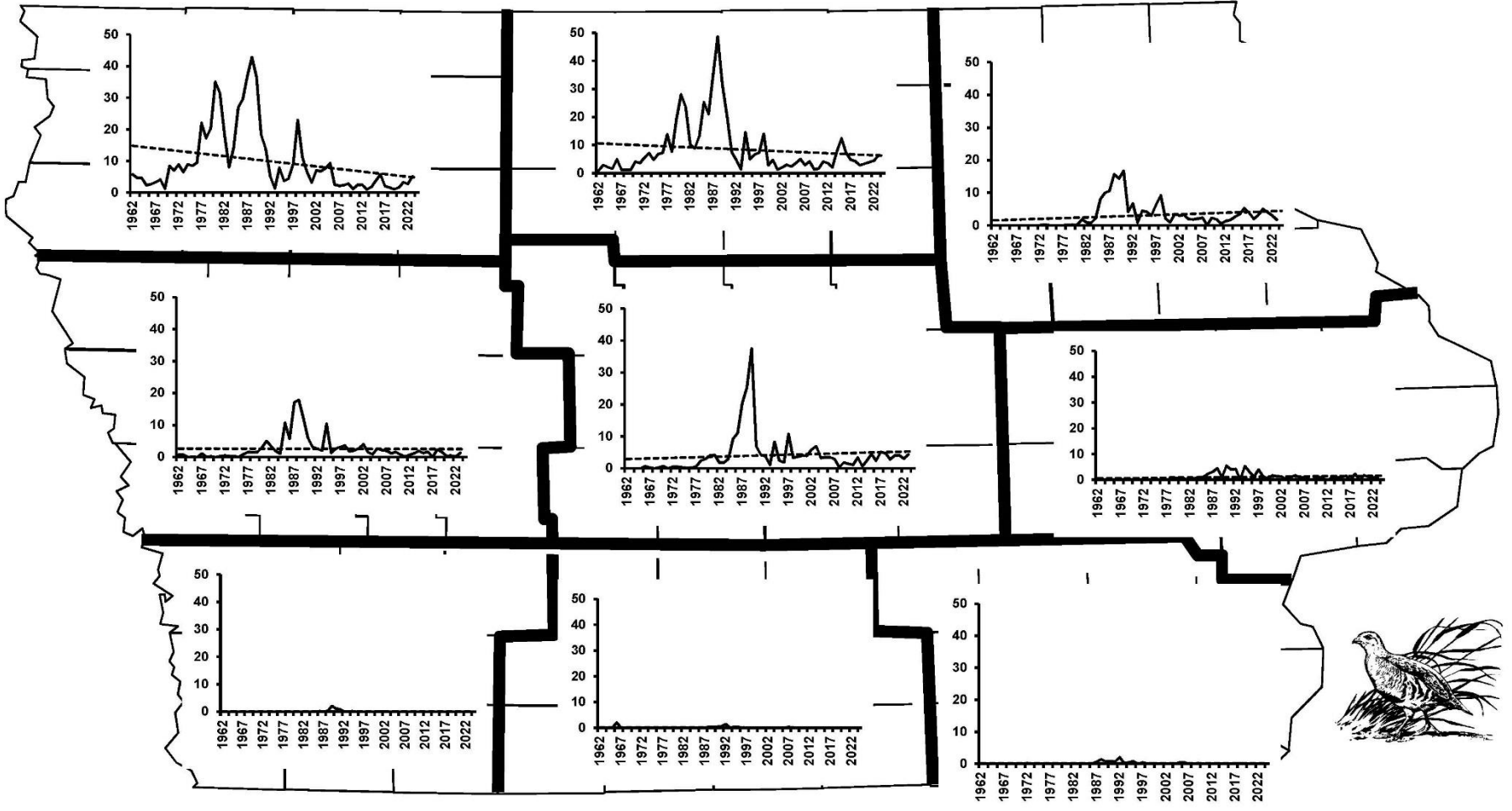


Figure 8 Regional trends in gray partridge numbers from the August roadside survey (1963-present).

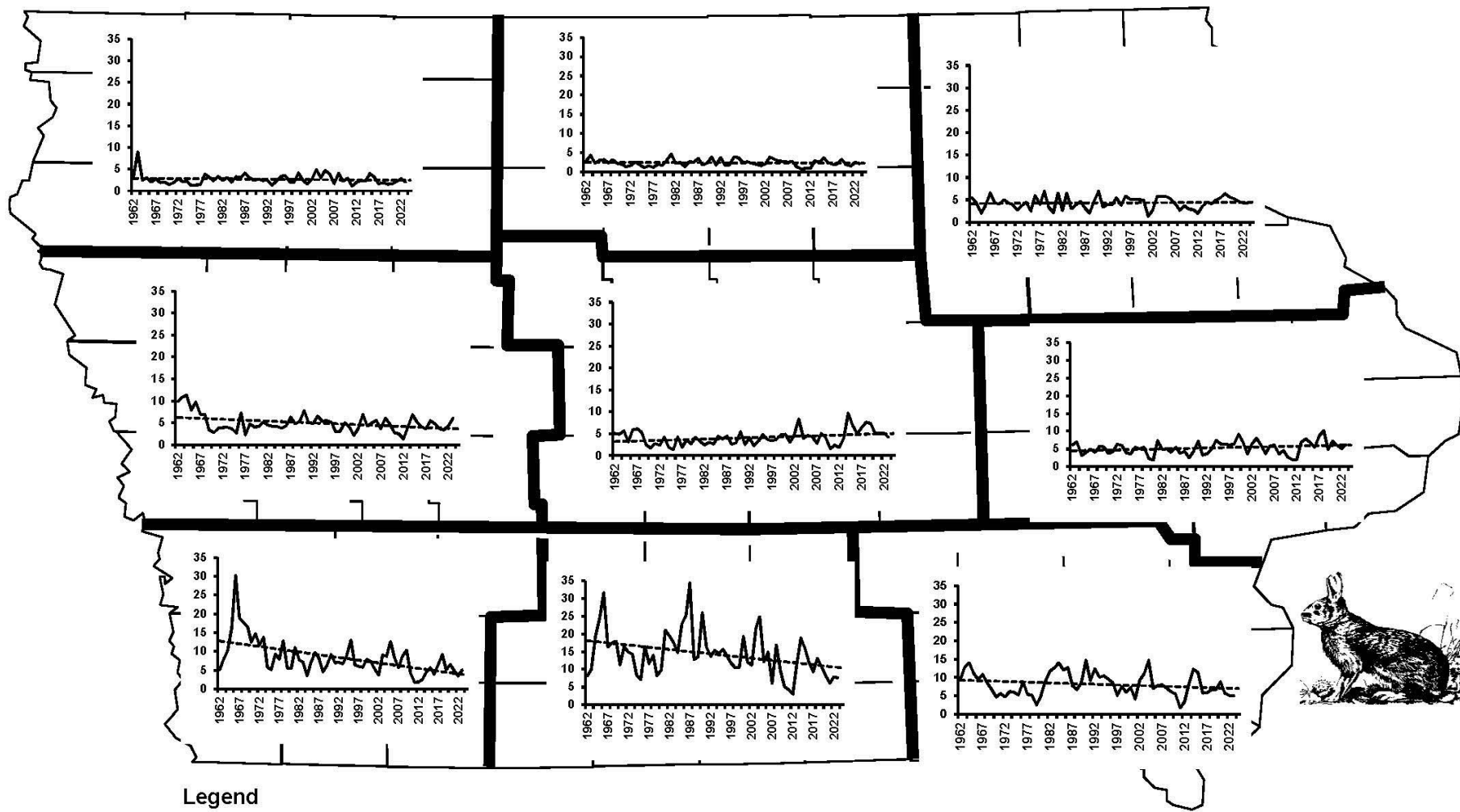


Figure 9 Regional trends in cottontail rabbit numbers from the August roadside survey (1962-present).

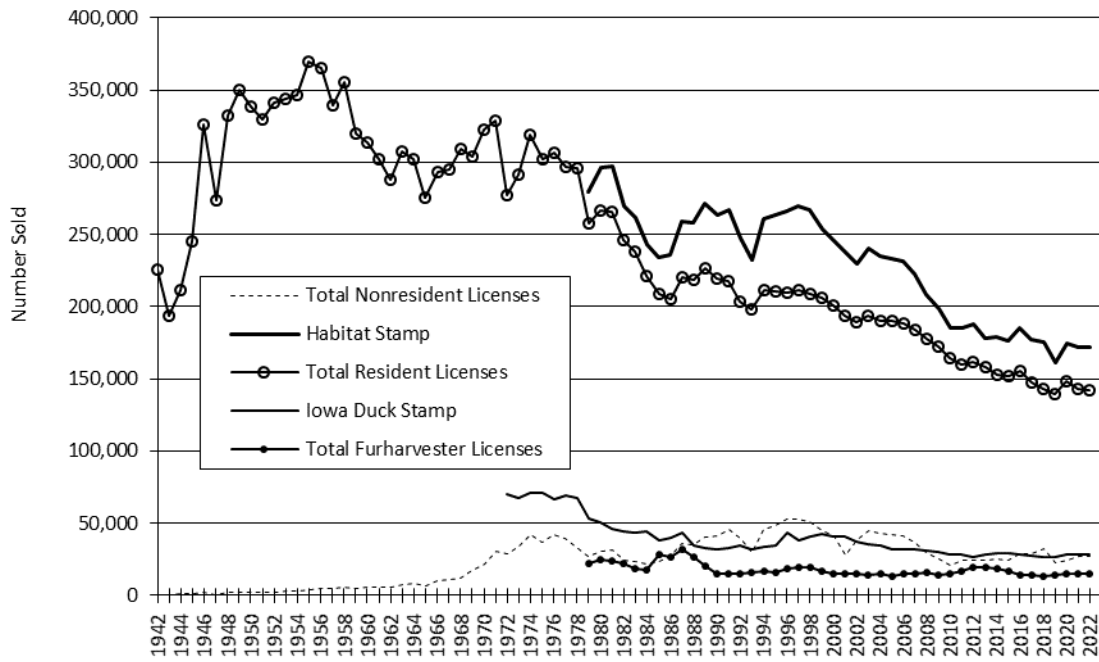


Figure 10 Sales of Iowa hunting licenses

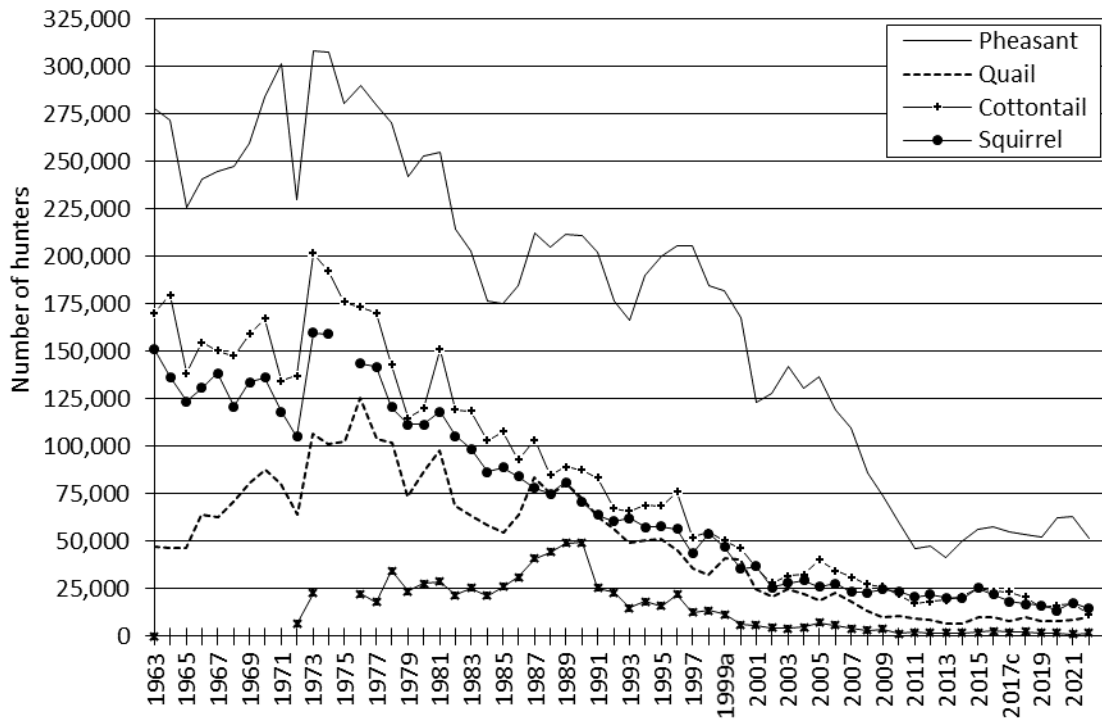


Figure 11 Estimated number of Iowa small-game hunters (resident and nonresident hunters combined)

**Table 15 Mean number of hens with broods and hens without broods counted/30-mile route on the Iowa August roadside survey, regionally and statewide (1962-present). Severe winter weather preceded the August counts in 1965, 69, 75, 79, 82, 01, and 08. Abnormally wet weather occurred during the 1983, 84, 93, 99, 04, and 08 nesting seasons.**

YEAR	NORTH WEST		NORTH CENTRAL		NORTH EAST		WEST CENTRAL		CENTRAL		EAST CENTRAL		SOUTH WEST		SOUTH CENTRAL		SOUTH EAST		STATEWIDE	
	Hens w/o	Hens with	Hens w/o	Hens with	Hens w/o	Hens with	Hens w/o	Hens with	Hens w/o	Hens with	Hens w/o	Hens with	Hens w/o	Hens with	Hens w/o	Hens with	Hens w/o	Hens with	Hens w/o	Hens with
1962	4.4	9.2	6.3	10.5	3.4	10.3	2.1	7.9	3.1	6.7	1.1	2.8	1.1	5.6	0.3	0.8	1.1	0.4	2.7	6.1
1963	7.9	15.7	5.4	9.5	5.0	10.7	4.6	8.6	2.2	5.7	1.7	5.1	1.5	11.2	0.8	1.8	1.1	1.6	3.3	7.7
1964	8.1	10.1	6.4	14.4	1.6	10.9	3.6	9.6	2.9	5.0	1.5	5.5	2.2	7.6	0.8	2.2	1.9	1.5	3.4	7.4
1965	2.2	5.2	3.1	7.0	3.7	4.5	3.2	7.4	3.3	3.4	3.3	4.1	4.7	9.8	1.5	4.5	1.2	1.8	2.8	5.0
1966	2.2	4.7	3.3	8.7	4.5	6.9	2.7	5.7	3.1	4.7	3.9	7.0	7.4	15.8	2.9	3.9	1.2	1.3	3.2	6.0
1967	2.3	3.2	6.1	6.0	5.1	6.5	4.9	4.8	4.5	5.8	4.4	6.8	5.6	12.3	2.0	4.9	1.9	2.0	4.0	5.5
1968	2.5	4.5	4.8	5.8	4.9	5.6	3.0	5.8	2.7	5.7	2.4	7.1	5.8	13.3	1.6	3.6	1.0	1.5	3.0	5.5
1969	1.4	1.8	2.9	4.4	2.0	6.4	2.1	4.0	2.9	5.6	2.1	6.9	5.3	8.6	1.2	4.7	1.4	2.3	2.2	4.7
1970	1.3	4.3	2.2	5.5	2.9	6.6	2.9	5.3	1.9	10.0	4.1	9.9	3.1	11.7	1.8	5.3	1.3	3.6	2.3	6.7
1971	1.8	3.1	2.5	5.1	2.6	6.1	3.1	6.3	2.3	9.4	3.9	11.6	4.8	9.6	1.7	4.4	2.2	4.9	2.6	6.5
1972	2.0	3.9	2.7	4.9	3.7	7.1	2.8	6.3	3.7	8.3	4.9	10.0	3.9	11.6	2.9	5.9	1.9	3.0	3.1	6.5
1973	3.2	5.0	2.7	6.8	3.4	7.7	5.1	7.1	4.9	9.6	7.3	11.1	3.1	8.1	2.2	5.2	1.7	3.2	3.8	7.2
1974	3.2	5.3	3.8	6.1	4.3	5.8	5.4	6.7	5.9	3.8	5.0	6.7	4.4	9.1	2.4	5.3	1.7	1.9	4.0	5.5
1975	0.5	1.3	1.3	3.3	2.8	6.1	1.7	3.3	2.7	4.8	3.8	7.4	1.7	5.0	1.3	4.2	1.0	3.0	1.9	4.2
1976	0.7	1.5	2.0	4.9	4.7	8.4	2.2	5.1	3.2	6.0	5.1	10.0	2.5	7.0	1.7	3.8	2.3	3.5	2.7	5.5
1977	1.1	2.7	1.2	5.0	2.1	9.1	0.9	4.8	4.2	6.1	4.0	9.7	1.9	6.1	2.0	3.3	1.2	2.6	2.1	5.3
1978	1.4	3.7	1.0	2.8	2.3	7.8	3.0	5.8	3.0	5.5	3.1	6.7	1.3	6.4	1.7	3.8	1.7	2.9	2.1	4.9
1979	1.7	4.6	1.1	2.8	3.1	4.9	2.4	4.8	1.0	3.2	1.7	5.0	2.1	6.9	1.8	4.3	1.0	2.3	1.7	4.1
1980	2.6	5.3	2.8	6.2	2.8	9.4	2.9	10.5	3.6	8.6	2.4	8.2	4.5	7.7	2.4	5.8	0.9	3.8	2.7	7.1
1981	3.1	8.0	2.2	5.4	3.3	9.6	2.9	10.0	2.9	6.8	3.3	9.9	4.5	10.7	2.4	6.4	1.4	3.6	2.8	7.5
1982	1.4	2.8	1.4	3.2	1.5	5.1	2.4	6.3	1.0	2.3	1.5	2.3	2.2	5.0	1.2	5.4	1.2	2.5	1.5	3.7
1983	0.9	0.8	0.8	1.1	1.3	2.0	1.3	1.8	0.6	1.5	1.0	2.7	2.3	5.1	2.0	6.1	1.3	2.8	1.2	2.5
1984	0.3	0.9	0.7	0.8	1.2	1.9	0.8	2.0	0.7	1.5	1.0	2.9	0.7	2.1	1.9	4.8	0.9	2.7	0.9	2.2
1985	0.4	1.8	1.0	2.4	1.1	2.8	1.2	4.0	0.9	2.8	1.0	2.7	0.9	5.5	1.2	6.3	0.8	3.9	0.9	3.5
1986	0.5	2.2	1.0	1.8	1.4	4.2	0.8	3.3	1.1	2.5	1.3	3.5	1.7	4.5	2.0	6.5	1.8	2.9	1.3	3.4
1987	1.1	3.0	1.0	3.4	1.6	3.6	1.1	6.1	1.4	4.4	1.3	3.2	1.3	5.9	2.2	6.1	1.4	3.6	1.4	4.2
1988	1.1	3.2	0.8	3.0	2.3	4.4	1.4	5.1	0.8	2.8	1.4	2.3	1.5	5.3	1.2	5.2	1.7	3.1	1.3	3.7
1989	0.8	2.9	1.4	3.5	0.9	6.4	2.5	7.1	1.4	5.6	1.0	3.5	1.1	4.5	1.3	4.0	1.7	4.2	1.3	4.5
1990	1.6	4.0	2.2	5.4	2.3	7.2	3.0	6.8	2.8	5.4	2.2	2.5	1.6	5.2	1.2	3.3	1.4	3.0	2.0	4.6

YEAR	NORTH WEST		NORTH CENTRAL		NORTH EAST		WEST CENTRAL		CENTRAL		EAST CENTRAL		SOUTH WEST		SOUTH CENTRAL		SOUTH EAST		STATEWIDE	
	Hens w/o	Hens with	Hens w/o	Hens with	Hens w/o	Hens with	Hens w/o	Hens with	Hens w/o	Hens with	Hens w/o	Hens with	Hens w/o	Hens with	Hens w/o	Hens with	Hens w/o	Hens with	Hens w/o	Hens with
1991	1.9	4.4	2.0	5.0	2.5	5.2	2.7	7.9	2.0	4.5	2.7	3.2	3.1	6.9	1.3	5.4	0.9	4.8	2.0	5.1
1992	1.3	3.2	1.7	5.3	1.8	3.2	3.6	4.7	2.5	4.6	1.9	4.1	3.9	3.9	1.1	3.4	1.7	3.6	2.0	4.1
1993	0.8	1.5	1.3	2.1	0.9	1.4	1.4	6.1	0.8	2.8	1.4	2.3	1.2	4.2	0.6	2.3	0.7	3.0	1.0	2.7
1994	0.8	5.8	2.5	7.3	1.2	3.9	4.1	9.2	2.0	6.3	3.1	8.0	1.8	5.0	1.1	5.0	2.3	7.0	2.1	6.4
1995	1.2	3.2	2.2	7.6	1.2	3.8	2.5	4.9	1.9	6.6	2.6	5.5	1.6	5.8	0.5	3.0	1.6	4.8	1.7	5.1
1996	1.9	7.0	2.7	7.7	1.8	3.8	2.9	6.0	2.2	5.8	1.9	7.1	1.4	4.1	1.3	2.5	1.6	3.4	2.0	5.4
1997	1.6	4.3	2.0	7.1	1.2	5.2	1.7	3.8	2.5	7.1	2.4	5.0	1.4	4.4	1.0	2.2	1.3	4.2	1.7	5.0
1998	1.9	7.3	2.1	6.6	1.7	4.9	1.2	4.3	2.4	5.8	1.5	5.4	1.6	2.0	0.9	1.5	2.6	4.8	1.8	4.9
1999	3.2	5.5	2.8	3.9	0.8	2.8	1.1	2.3	1.9	4.5	2.5	4.0	0.6	2.2	0.4	1.5	1.0	2.9	1.7	3.5
2000	3.6	7.3	2.9	4.0	0.8	1.7	1.8	3.3	2.1	6.3	2.6	4.4	1.2	3.1	1.0	2.5	0.7	2.4	2.0	4.1
2001	1.8	2.6	0.5	1.9	0.2	0.6	0.4	1.1	0.6	2.4	1.2	1.9	0.7	1.2	0.4	0.7	0.5	0.4	0.7	1.5
2002	2.0	4.9	1.4	5.1	0.7	1.3	0.8	3.1	1.3	5.1	1.5	3.4	0.5	1.6	0.4	1.0	0.6	2.3	1.1	3.3
2003	3.5	10.1	2.7	7.4	0.7	2.6	1.4	3.9	2.5	7.0	1.9	3.7	0.5	2.5	0.4	2.1	1.0	2.7	1.8	5.0
2004	5.0	7.0	3.5	4.6	1.1	2.4	1.4	3.0	1.7	4.2	0.8	3.2	1.6	2.9	0.8	2.0	0.8	2.8	1.9	3.7
2005	2.9	7.7	1.8	5.7	1.2	2.5	1.7	3.7	1.7	6.6	1.0	3.1	1.9	3.2	0.4	1.1	0.6	2.2	1.5	4.2
2006	2.5	5.8	1.9	4.9	1.0	1.8	1.1	3.3	1.8	4.8	0.9	2.4	0.8	2.5	0.9	1.0	0.7	1.8	1.4	3.3
2007	1.7	5.1	1.0	4.7	0.9	2.7	1.0	3.0	1.1	4.7	1.6	2.9	0.6	1.5	0.6	0.5	0.6	2.5	1.0	2.5
2008	2.7	5.7	1.7	2.6	0.8	0.6	1.3	2.4	1.1	1.9	0.2	0.8	0.8	0.7	0.1	0.4	0.6	0.6	1.1	1.9
2009	3.1	4.2	1.2	2.5	0.1	0.3	1.4	3.1	0.8	2.3	0.7	0.9	0.8	1.1	0.4	0.5	0.3	1.0	1.0	1.8
2010	2.3	3.7	0.5	1.4	0.3	0.5	0.4	0.9	0.6	1.1	0.2	0.5	0.6	0.6	0.1	0.1	0.2	0.6	0.6	1.1
2011	0.7	1.1	0.3	0.9	0.1	0.1	0.3	0.5	0.4	1.2	0.1	0.4	0.3	0.6	0.1	0.3	0.2	0.6	0.3	0.7
2012	0.8	2.2	0.4	1.3	0.0	0.2	0.2	0.4	0.3	1.4	0.0	0.4	0.1	0.6	0.1	0.4	0.2	0.5	0.3	0.9
2013	0.8	1.6	0.5	1.2	0.2	0.1	0.3	0.7	0.2	0.9	0.0	0.5	0.4	0.3	0.2	0.4	0.6	0.7	0.4	0.7
2014	0.8	4.0	0.7	1.9	0.2	0.1	1.3	2.6	0.7	1.8	0.3	1.3	0.4	0.9	0.4	0.9	0.8	2.6	0.6	1.9
2015	1.8	5.1	0.8	2.6	0.2	1.1	1.0	2.8	1.3	4.5	0.8	1.7	0.5	1.4	0.2	0.8	1.0	3.2	0.9	2.7
2016	1.7	4.4	1.4	3.0	0.2	0.9	0.8	2.3	0.9	3.8	0.5	1.9	0.7	1.1	0.5	0.8	0.9	3.0	0.9	2.5
2017	1.3	3.2	0.8	2.0	0.2	0.8	0.6	1.5	0.6	2.9	0.5	1.4	1.0	0.6	0.3	0.5	0.7	1.9	0.7	1.8
2018	1.5	3.2	0.8	2.2	0.4	1.5	1.1	3.3	1.2	4.8	0.4	1.5	0.7	1.1	0.6	1.3	0.6	2.8	0.8	2.5
2019	1.2	2.7	0.8	2.1	0.5	1.7	1.2	2.9	1.7	3.0	0.7	0.8	0.4	0.8	0.2	0.8	0.9	1.2	0.9	1.8
2020	1.6	3.6	1.1	2.8	1.7	2.9	1.8	2.4	1.7	2.4	0.4	1.4	0.4	0.7	0.2	0.8	0.9	3.6	1.1	2.3
2021	1.0	3.3	1.6	3.9	0.4	2.2	2.0	3.5	1.2	2.9	0.4	1.2	0.1	0.7	0.4	0.9	0.7	1.5	0.9	2.3
2022	2.1	3.4	1.4	3.3	0.8	1.5	1.4	3.3	1.2	2.9	0.7	1.7	0.2	0.4	0.3	0.6	0.8	1.5	1.0	2.2

YEAR	NORTH WEST		NORTH CENTRAL		NORTH EAST		WEST CENTRAL		CENTRAL		EAST CENTRAL		SOUTH WEST		SOUTH CENTRAL		SOUTH EAST		STATEWIDE	
	Hens w/o	Hens with	Hens w/o	Hens with	Hens w/o	Hens with	Hens w/o	Hens with	Hens w/o	Hens with	Hens w/o	Hens with	Hens w/o	Hens with	Hens w/o	Hens with	Hens w/o	Hens with	Hens w/o	Hens with
2023	2.0	5.0	0.9	3.4	0.5	3.1	2.0	3.1	1.3	2.7	0.4	0.9	0.6	1.6	0.2	0.9	0.6	1.8	1.0	2.6
<b>Mean</b>																				
10 Year	1.5	3.8	1.0	2.7	0.5	1.6	1.3	2.8	1.2	3.2	0.5	1.4	0.5	0.9	0.3	0.8	0.8	2.3	0.9	2.3
Long-term	2.0	4.4	2.0	4.5	1.7	4.1	2.0	4.5	2.0	4.6	1.9	4.3	1.9	4.8	1.1	2.9	1.1	2.6	1.7	4.0
<b>Change %</b>																				
2022	-3.7	45.0	-37.5	0.7	-40.0	113.8	36.4	-7.8	16.3	-9.6	-40.0	-46.2	175.2	262.8	-27.9	47.2	-26.4	25.7	-4.1	17.3
10 Year	33.1	30.9	-15.1	24.2	-8.6	99.4	49.2	11.2	13.2	-16.3	-21.4	-33.9	23.2	72.9	-28.4	9.7	-26.4	-20.6	11.0	13.4
Long-term	-0.4	12.4	-55.4	-24.7	-74.1	-24.6	-1.8	-32.0	-31.4	-41.8	-79.4	-78.5	-67.6	-66.4	-77.8	-68.3	-48.5	-29.7	-43.5	-36.5